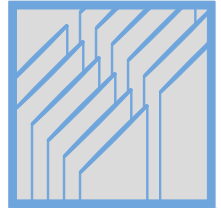


QuickSet Series

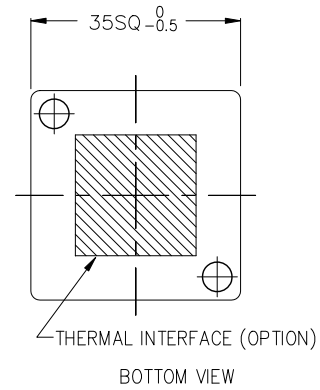
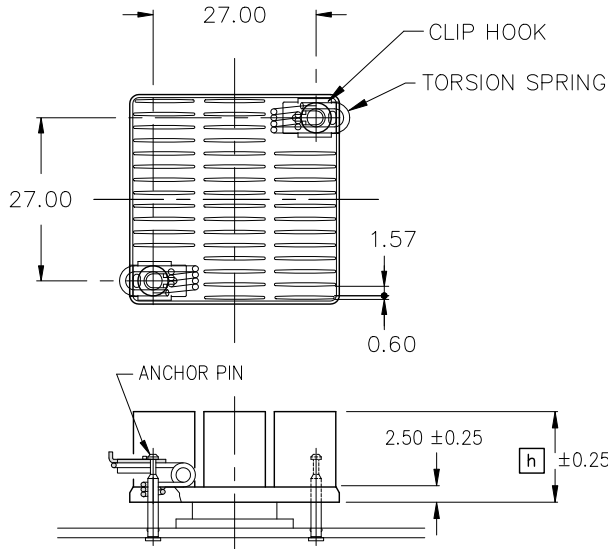
QTUM

QTUH

ALPHA



DIM



ANCHOR PIN LENGTH

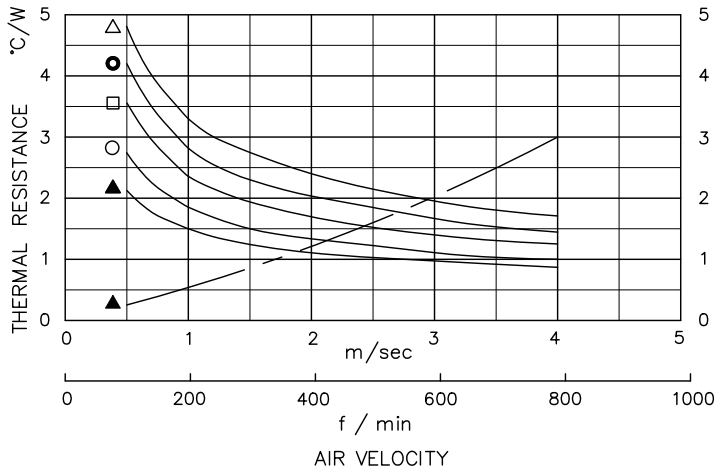
8.00	: ANCR-8
11.00	: ANCR-11
12.00	: ANCR-12
13.00	: ANCR-13
16.00	: ANCR-16

MATERIAL
 HEATSINK : A6063 BLACK ANODIZE
 SMALL IMPERFECTIONS TO SURFACE AND
 FINISH ARE ACCEPTABLE AROUND HOLES
 SPRING : SW-C NICKEL PRECOATED
 HOOK : STAINLESS STEEL 304
 ANCHOR : STAINLESS STEEL 303

DIMENSIONS : mm

BASIC HEATSINK MODEL NUMBER (SPRING, ANCHOR, TIM NOT INCLUDED)	OVERALL HEIGHT [h]	BASIC HEATSINK WEIGHT (grams)	FEATURES
QTUM35-10B	10	12.5	FOR FORCED CONVECTION HIGH PERFORMANCE HEATSINK.
QTUM35-12B	12	13.6	
QTUM35-15B	15	15.4	
QTUM35-20B	20	18.3	
QTUM35-25B	25	21.2	

DATA



- △ QTUM35-10B
- QTUM35-12B
- QTUM35-15B
- QTUM35-20B
- ▲ QTUM35-25B

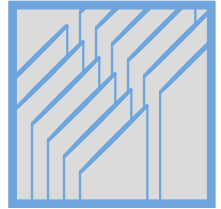
● DUCTED CONDITION
 DUMMY HEATER SIZE: 12.7 SQ
 THERMAL RESISTANCE _____
 PRESURE DROP - - - - -

■ BASED ON ALPHA'S STANDARD TEST PROCEDURE.
 REFER TO TECHNICAL INFORMATION.

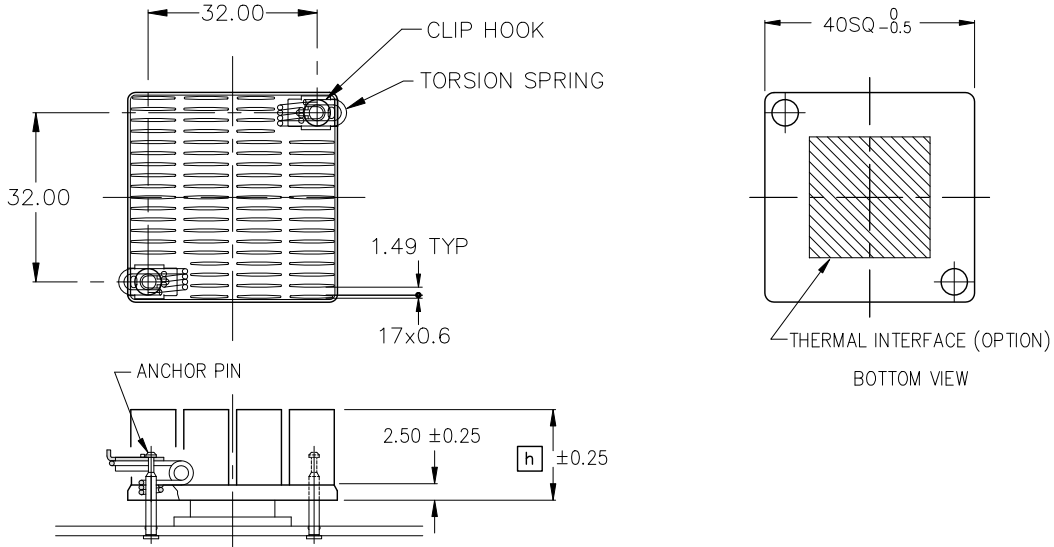
ALPHA

QuickSet HeatSink

QTUM40



DIM



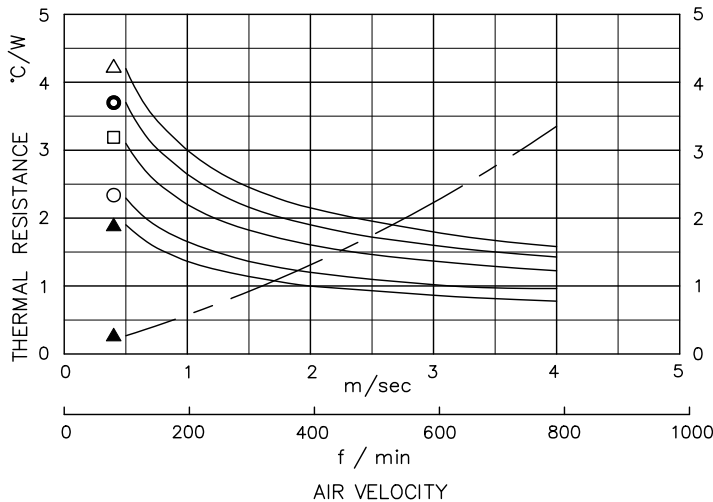
ANCHOR PIN LENGTH
 8.00 : ANCR-8
 11.00 : ANCR-11
 12.00 : ANCR-12
 13.00 : ANCR-13
 16.00 : ANCR-16

MATERIAL
 HEATSINK : A6063 BLACK ANODIZE
 SMALL IMPERFECTIONS TO SURFACE AND
 FINISH ARE ACCEPTABLE AROUND HOLES
 SPRING : SW-C NICKEL PRECOATED
 HOOK : STAINLESS STEEL 304
 ANCHOR : STAINLESS STEEL 303

DIMENSIONS : mm

BASIC HEATSINK MODEL NUMBER (SPRING, ANCHOR, TIM NOT INCLUDED)	OVERALL HEIGHT [h]	BASIC HEATSINK WEIGHT (grams)	FEATURES
QTUM40-10B	10	16.6	FOR FORCED CONVECTION HIGH PERFORMANCE HEATSINK.
QTUM40-12B	12	18.2	
QTUM40-15B	15	20.6	
QTUM40-20B	20	24.6	
QTUM40-25B	25	28.6	

DATA



△ QTUM40-10B
 ● QTUM40-12B
 □ QTUM40-15B
 ◊ QTUM40-20B
 ▲ QTUM40-25B

● DUCTED CONDITION
 DUMMY HEATER SIZE: 12.7 SQ
 THERMAL RESISTANCE ———
 PRESURE DROP - - - -

■ BASED ON ALPHA'S STANDARD TEST PROCEDURE.
 REFER TO TECHNICAL INFORMATION.

Alpha Company Ltd.

256-1 UEDA, NUMAZU-CITY SHIZUOKA-PREF., JAPAN
 PHONE +81(55)966 0789
 FAX +81(55)966 9192
 E mail : alpha@micforg.co.jp
 URL : www.micforg.co.jp

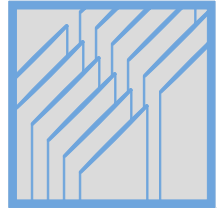
Alpha Novatech, Inc. - a subsidiary of Alpha Company.

473 Sapena Ct. #12 Santa Clara, CA 95054 USA
 PHONE +1(408)567-8082
 FAX +1(408)567-8053
 E mail : sales@alphanovatech.com
 URL : www.alphanovatech.com

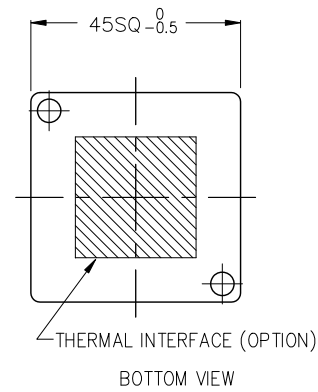
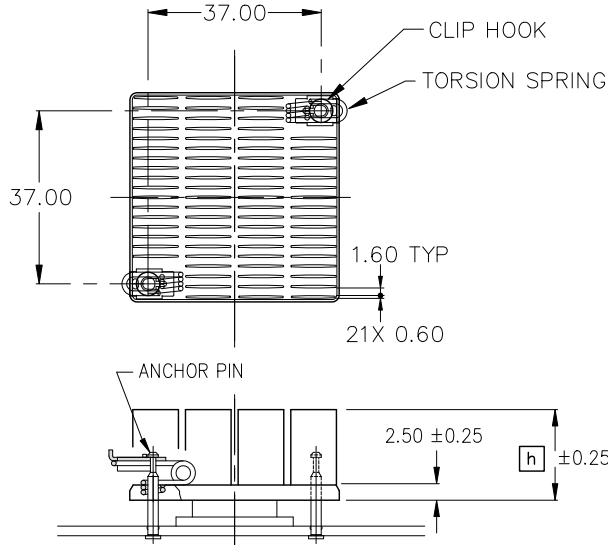
ALPHA

QuickSet HeatSink

QTUM45



DIM



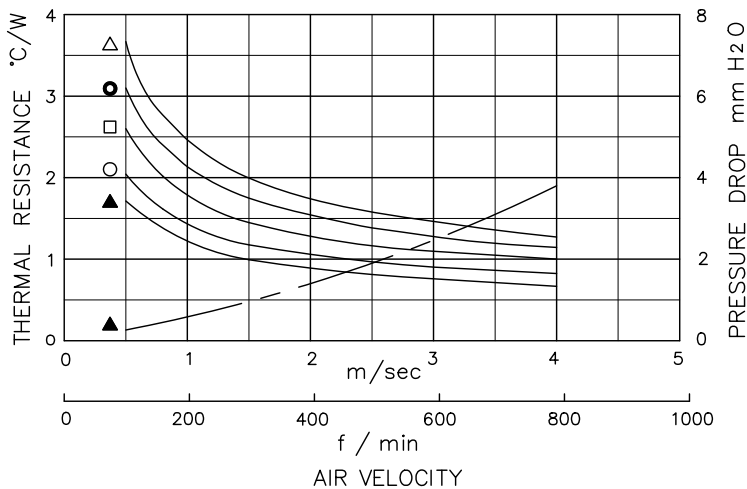
ANCHOR PIN LENGTH
 8.00 : ANCR-8
 11.00 : ANCR-11
 12.00 : ANCR-12
 13.00 : ANCR-13
 16.00 : ANCR-16

MATERIAL
 HEATSINK : A6063 BLACK ANODIZE
 SMALL IMPERFECTIONS TO SURFACE AND
 FINISH ARE ACCEPTABLE AROUND HOLES
 SPRING : SW-C NICKEL PRECOATED
 HOOK : STAINLESS STEEL 304
 ANCHOR : STAINLESS STEEL 303

DIMENSIONS : mm

BASIC HEATSINK MODEL NUMBER (SPRING, ANCHOR, TIM NOT INCLUDED)	OVERALL HEIGHT [h]	BASIC HEATSINK WEIGHT (grams)	FEATURES
QTUM45-10B	10	21.2	FOR FORCED CONVECTION HIGH PERFORMANCE HEATSINK.
QTUM45-12B	12	23.2	
QTUM45-15B	15	26.3	
QTUM45-20B	20	31.4	
QTUM45-25B	25	36.5	

DATA



- △ QTUM45-10B
- QTUM45-12B
- QTUM45-15B
- QTUM45-20B
- ▲ QTUM45-25B

● DUCTED CONDITION
 DUMMY HEATER SIZE: 12.7 SQ
 THERMAL RESISTANCE ———
 PRESURE DROP - - - - -

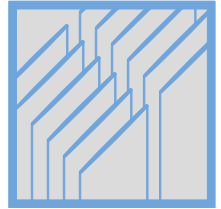
■ BASED ON ALPHA'S STANDARD TEST PROCEDURE.
 REFER TO TECHNICAL INFORMATION.

Alpha Company Ltd.

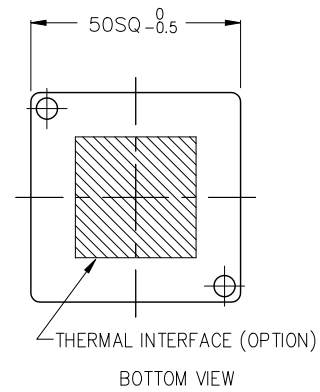
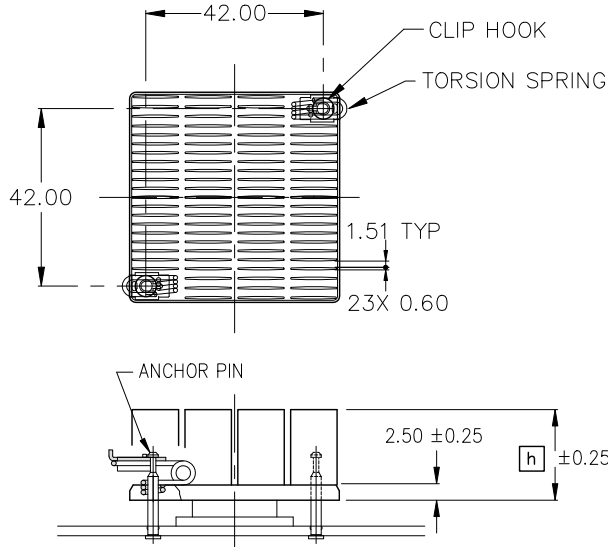
256-1 UEDA, NUMAZU-CITY SHIZUOKA-PREF., JAPAN
 PHONE +81(55)966 0789
 FAX +81(55)966 9192
 E mail : alpha@micforg.co.jp
 URL : www.micforg.co.jp

Alpha Novatech, Inc. - a subsidiary of Alpha Company.

473 Sapena Ct. #12 Santa Clara, CA 95054 USA
 PHONE +1(408)567-8082
 FAX +1(408)567-8053
 E mail : sales@alphanovatech.com
 URL : www.alphanovatech.com



DIM



ANCHOR PIN LENGTH

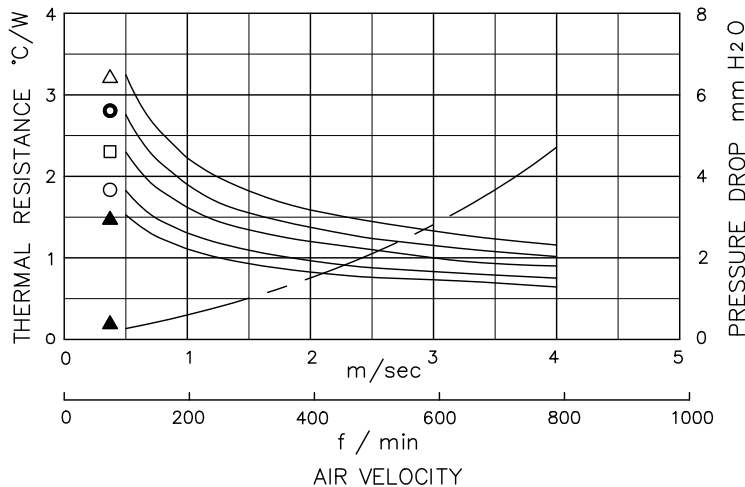
8.00	: ANCR-8
11.00	: ANCR-11
12.00	: ANCR-12
13.00	: ANCR-13
16.00	: ANCR-16

MATERIAL
 HEATSINK : A6063 BLACK ANODIZE
 SMALL IMPERFECTIONS TO SURFACE AND
 FINISH ARE ACCEPTABLE AROUND HOLES
 SPRING : SW-C NICKEL PRECOATED
 HOOK : STAINLESS STEEL 304
 ANCHOR : STAINLESS STEEL 303

DIMENSIONS : mm

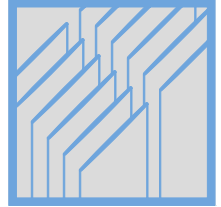
BASIC HEATSINK MODEL NUMBER (SPRING, ANCHOR, TIM NOT INCLUDED)	OVERALL HEIGHT [h]	BASIC HEATSINK WEIGHT (grams)	FEATURES
QTUM50-10B	10	27.5	FOR FORCED CONVECTION HIGH PERFORMANCE HEATSINK.
QTUM50-12B	12	30.3	
QTUM50-15B	15	34.7	
QTUM50-20B	20	41.8	
QTUM50-25B	25	49.0	

DATA

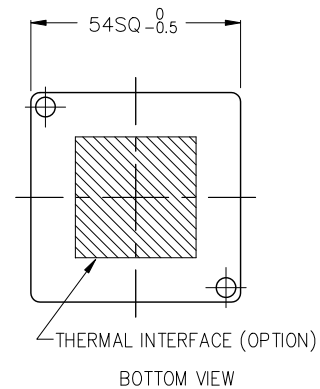
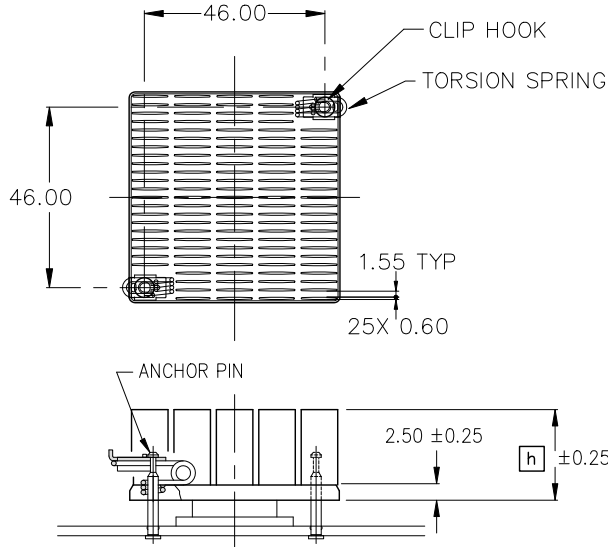


- △ QTUM50-10B
- QTUM50-12B
- QTUM50-15B
- ◇ QTUM50-20B
- ▲ QTUM50-25B

● DUCTED CONDITION
 DUMMY HEATER SIZE: 12.7 SQ
 THERMAL RESISTANCE ———
 PRESSURE DROP - - - - -
 ■ BASED ON ALPHA'S STANDARD TEST PROCEDURE.
 REFER TO TECHNICAL INFORMATION.



DIM



ANCHOR PIN LENGTH

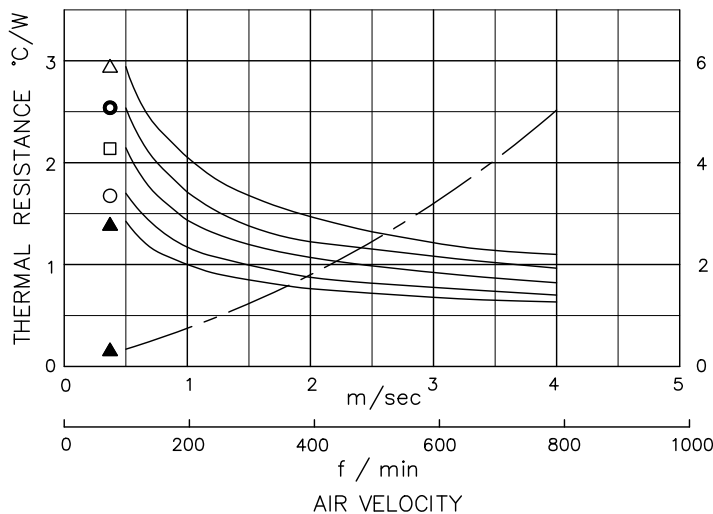
8.00	: ANCR-8
11.00	: ANCR-11
12.00	: ANCR-12
13.00	: ANCR-13
16.00	: ANCR-16

MATERIAL
 HEATSINK : A6063 BLACK ANODIZE
 SMALL IMPERFECTIONS TO SURFACE AND
 FINISH ARE ACCEPTABLE AROUND HOLES
 SPRING : SW-C NICKEL PRECOATED
 HOOK : STAINLESS STEEL 304
 ANCHOR : STAINLESS STEEL 303

DIMENSIONS : mm

BASIC HEATSINK MODEL NUMBER (SPRING, ANCHOR, TIM NOT INCLUDED)	OVERALL HEIGHT [h]	BASIC HEATSINK WEIGHT (grams)	FEATURES
QTUM54-10B	10	30.7	FOR FORCED CONVECTION HIGH PERFORMANCE HEATSINK.
QTUM54-12B	12	33.6	
QTUM54-15B	15	38.1	
QTUM54-20B	20	45.6	
QTUM54-25B	25	53.1	

DATA



- △ QTUM54-10B
- QTUM54-12B
- QTUM54-15B
- QTUM54-20B
- ▲ QTUM54-25B

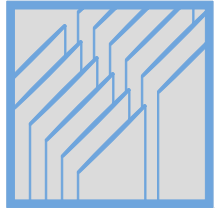
● DUCTED CONDITION
 DUMMY HEATER SIZE: 12.7 SQ
 THERMAL RESISTANCE ———
 PRESURE DROP - - - -

■ BASED ON ALPHA'S STANDARD TEST PROCEDURE.
 REFER TO TECHNICAL INFORMATION.

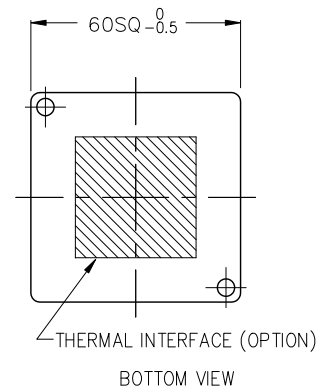
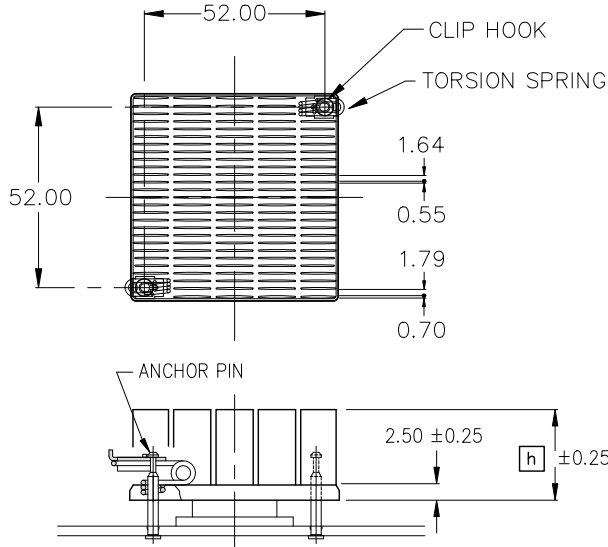
ALPHA

QuickSet HeatSink

QTUM60



DIM



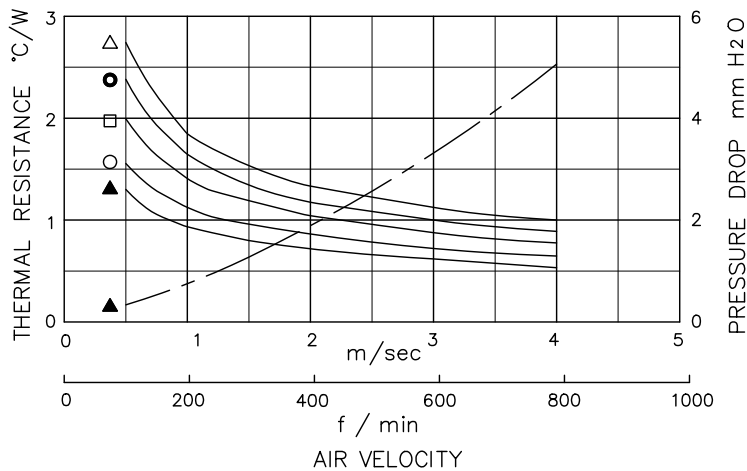
ANCHOR PIN LENGTH
 8.00 : ANCR-8
 11.00 : ANCR-11
 12.00 : ANCR-12
 13.00 : ANCR-13
 16.00 : ANCR-16

MATERIAL
 HEATSINK : A6063 BLACK ANODIZE
 SMALL IMPERFECTIONS TO SURFACE AND
 FINISH ARE ACCEPTABLE AROUND HOLES
 SPRING : SW-C NICKEL PRECOATED
 HOOK : STAINLESS STEEL 304
 ANCHOR : STAINLESS STEEL 303

DIMENSIONS : mm

BASIC HEATSINK MODEL NUMBER (SPRING, ANCHOR, TIM NOT INCLUDED)	OVERALL HEIGHT [h]	BASIC HEATSINK WEIGHT (grams)	FEATURES
QTUM60-10B	10	37.5	FOR FORCED CONVECTION HIGH PERFORMANCE HEATSINK.
QTUM60-12B	12	41.0	
QTUM60-15B	15	46.4	
QTUM60-20B	20	55.4	
QTUM60-25B	25	64.3	

DATA



- △ QTUM60-10B
- QTUM60-12B
- QTUM60-15B
- QTUM60-20B
- ▲ QTUM60-25B

● DUCTED CONDITION
 DUMMY HEATER SIZE: 12.7 SQ
 THERMAL RESISTANCE ———
 PRESURE DROP - - - -

■ BASED ON ALPHA'S STANDARD TEST PROCEDURE.
 REFER TO TECHNICAL INFORMATION.

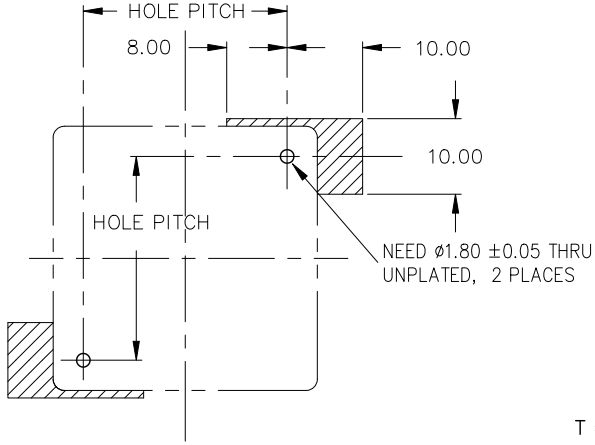
Alpha Company Ltd.

256-1 UEDA, NUMAZU-CITY SHIZUOKA-PREF., JAPAN
 PHONE +81(55)966 0789
 FAX +81(55)966 9192
 E mail : alpha@micforg.co.jp
 URL : www.micforg.co.jp

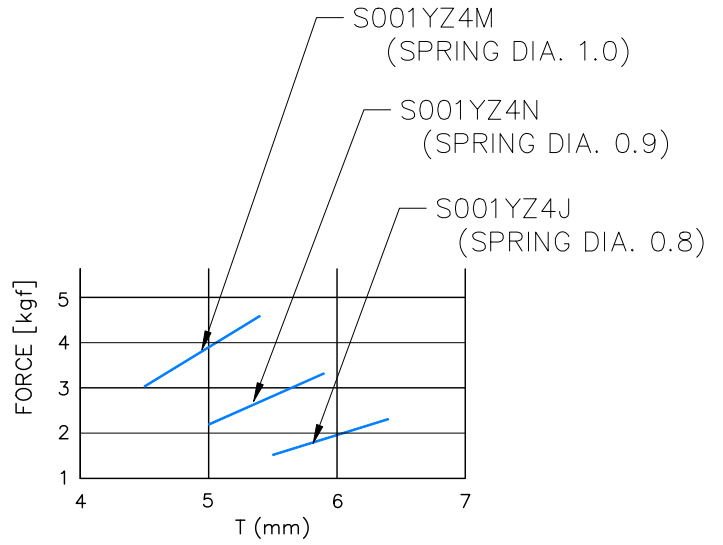
Alpha Novatech, Inc. - a subsidiary of Alpha Company.

473 Sapena Ct. #12 Santa Clara, CA 95054 USA
 PHONE +1(408)567-8082
 FAX +1(408)567-8053
 E mail : sales@alphanovatech.com
 URL : www.alphanovatech.com

● PCB HOLE PATTERN & SUGGESTED KEEP-OUT AREA



● ATTACHMENT FORCE



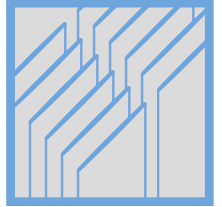
$$T = \begin{matrix} \text{ANCR-8} & : & + & 3.0 \\ \text{ANCR-11} & : & 0 \\ \text{ANCR-12} & : & - & 1.0 \\ \text{ANCR-13} & : & - & 2.0 \\ \text{ANCR-16} & : & - & 5.0 \end{matrix} + \begin{matrix} \text{CHIP} \\ \text{HEIGHT} \end{matrix} + \begin{matrix} \text{HEATSINK} \\ \text{BASE} \\ \text{THICK} \end{matrix} + \begin{matrix} \text{PCB} \\ \text{THICK} \end{matrix}$$

REF

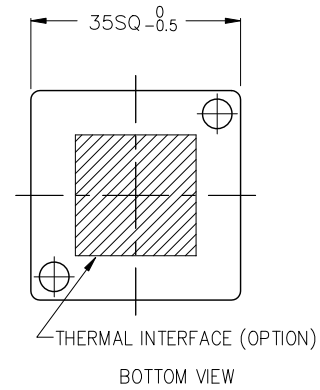
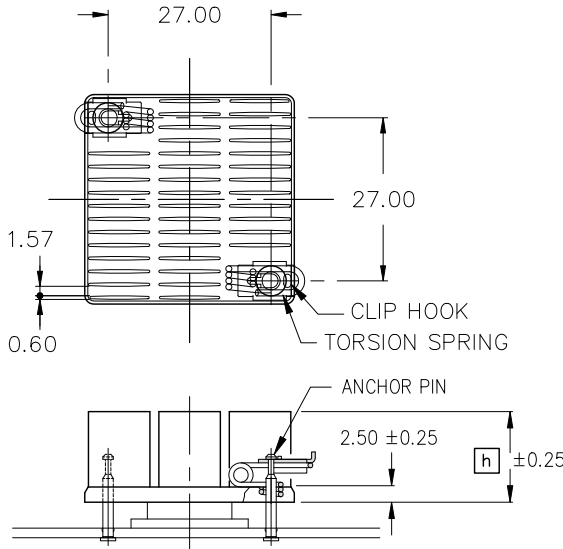


MODEL NAME INFORMATION

TO BUILD PART NUMBER, PLEASE VISIT OUR WEBSITE www.micforg.co.jp OR CONTACT ALPHA SALES.



DIM



ANCHOR PIN LENGTH

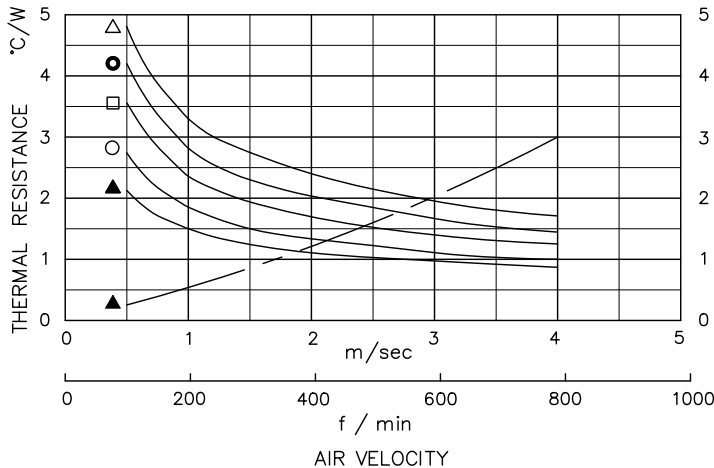
8.00	: ANCR-8
11.00	: ANCR-11
12.00	: ANCR-12
13.00	: ANCR-13
16.00	: ANCR-16

MATERIAL
 HEATSINK : A6063 BLACK ANODIZE
 SMALL IMPERFECTIONS TO SURFACE AND
 FINISH ARE ACCEPTABLE AROUND HOLES
 SPRING : SW-C NICKEL PRECOATED
 HOOK : STAINLESS STEEL 304
 ANCHOR : STAINLESS STEEL 303

DIMENSIONS : mm

BASIC HEATSINK MODEL NUMBER (SPRING, ANCHOR, TIM NOT INCLUDED)	OVERALL HEIGHT [h]	BASIC HEATSINK WEIGHT (grams)	FEATURES
QTUH35-10B	10	12.5	FOR FORCED CONVECTION HIGH PERFORMANCE HEATSINK.
QTUH35-12B	12	13.6	
QTUH35-15B	15	15.4	
QTUH35-20B	20	18.3	
QTUH35-25B	25	21.2	

DATA



- △ QTUH35-10B
- QTUH35-12B
- QTUH35-15B
- QTUH35-20B
- ▲ QTUH35-25B

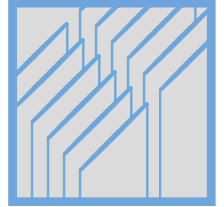
● DUCTED CONDITION
 DUMMY HEATER SIZE: 12.7 SQ
 THERMAL RESISTANCE ———
 PRESURE DROP - - -

■ BASED ON ALPHA'S STANDARD TEST PROCEDURE.
 REFER TO TECHNICAL INFORMATION.

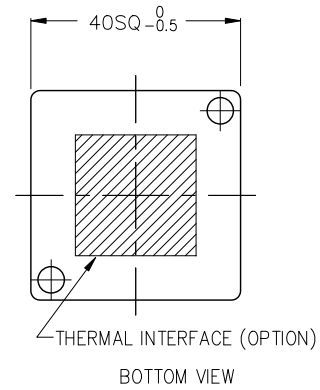
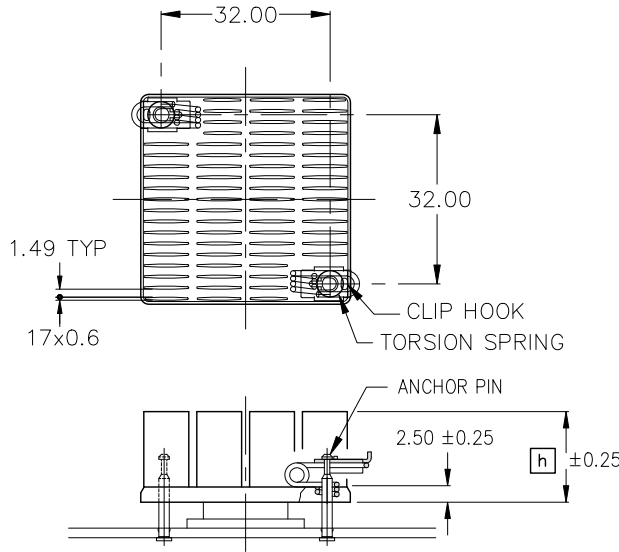
ALPHA

QuickSet HeatSink

QTUH40



DIM



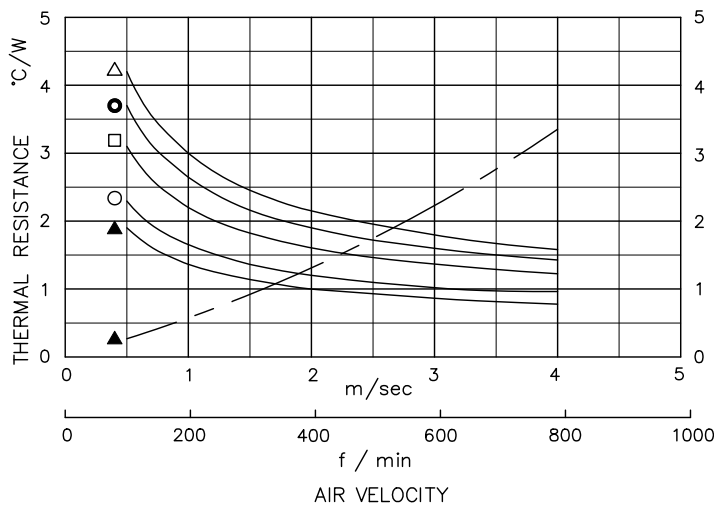
ANCHOR PIN LENGTH
 8.00 : ANCR-8
 11.00 : ANCR-11
 12.00 : ANCR-12
 13.00 : ANCR-13
 16.00 : ANCR-16

MATERIAL
 HEATSINK : A6063 BLACK ANODIZE
 SMALL IMPERFECTIONS TO SURFACE AND
 FINISH ARE ACCEPTABLE AROUND HOLES
 SPRING : SW-C NICKEL PRECOATED
 HOOK : STAINLESS STEEL 304
 ANCHOR : STAINLESS STEEL 303

DIMENSIONS : mm

BASIC HEATSINK MODEL NUMBER (SPRING, ANCHOR, TIM NOT INCLUDED)	OVERALL HEIGHT [h]	BASIC HEATSINK WEIGHT (grams)	FEATURES
QTUH40-10B	10	16.6	FOR FORCED CONVECTION HIGH PERFORMANCE HEATSINK.
QTUH40-12B	12	18.2	
QTUH40-15B	15	20.6	
QTUH40-20B	20	24.6	
QTUH40-25B	25	28.6	

DATA



- △ QTUH40-10B
- QTUH40-12B
- QTUH40-15B
- QTUH40-20B
- ▲ QTUH40-25B

● DUCTED CONDITION
 DUMMY HEATER SIZE: 12.7 SQ
 THERMAL RESISTANCE ———
 PRESURE DROP - - -

■ BASED ON ALPHA'S STANDARD TEST PROCEDURE.
 REFER TO TECHNICAL INFORMATION.

Alpha Company Ltd.

256-1 UEDA, NUMAZU-CITY SHIZUOKA-PREF., JAPAN
 PHONE +81(55)966 0789
 FAX +81(55)966 9192
 E mail : alpha@micforg.co.jp
 URL : www.micforg.co.jp

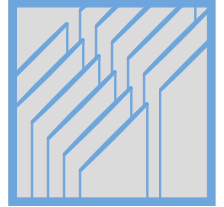
Alpha Novatech, Inc. - a subsidiary of Alpha Company.

473 Sapena Ct. #12 Santa Clara, CA 95054 USA
 PHONE +1(408)567-8082
 FAX +1(408)567-8053
 E mail : sales@alphanovatech.com
 URL : www.alphanovatech.com

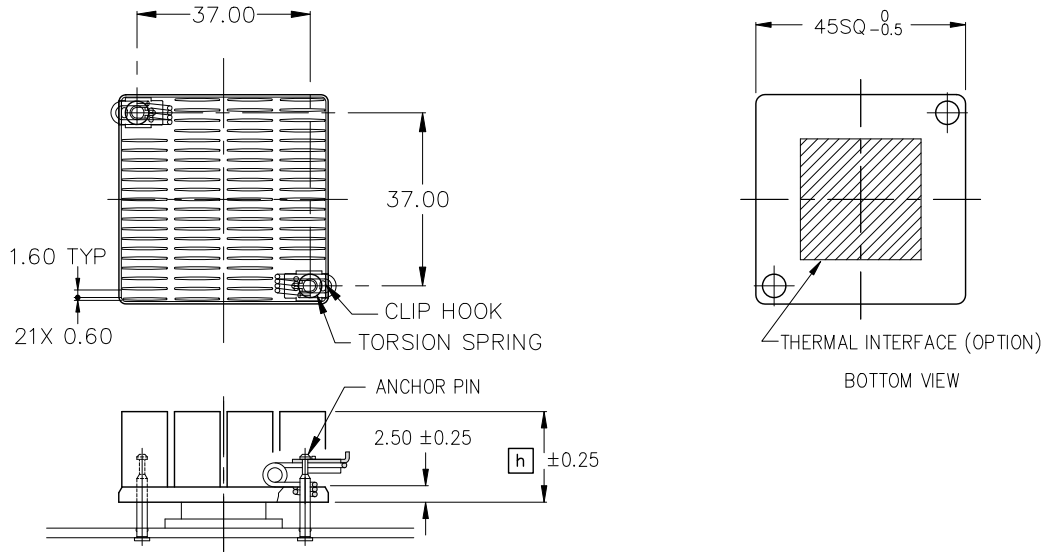
ALPHA

QuickSet HeatSink

QTUH45



DIM



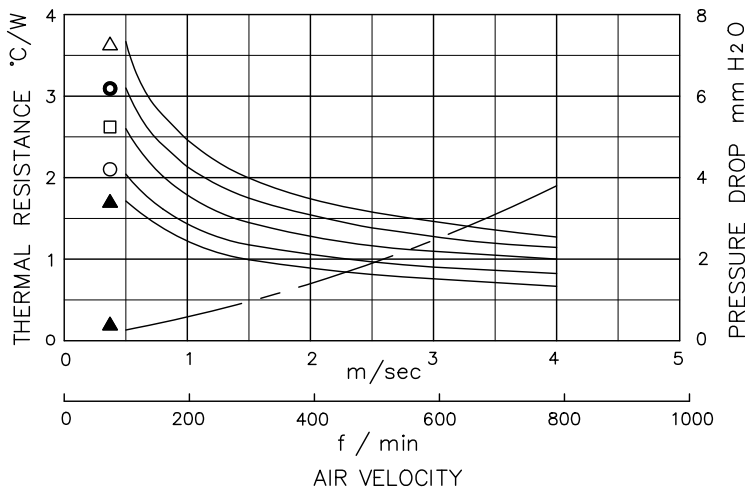
ANCHOR PIN LENGTH
 8.00 : ANCR-8
 11.00 : ANCR-11
 12.00 : ANCR-12
 13.00 : ANCR-13
 16.00 : ANCR-16

MATERIAL
 HEATSINK : A6063 BLACK ANODIZE
 SMALL IMPERFECTIONS TO SURFACE AND
 FINISH ARE ACCEPTABLE AROUND HOLES
 SPRING : SW-C NICKEL PRECOATED
 HOOK : STAINLESS STEEL 304
 ANCHOR : STAINLESS STEEL 303

DIMENSIONS : mm

BASIC HEATSINK MODEL NUMBER (SPRING, ANCHOR, TIM NOT INCLUDED)	OVERALL HEIGHT [h]	BASIC HEATSINK WEIGHT (grams)	FEATURES
QTUH45-10B	10	21.2	FOR FORCED CONVECTION HIGH PERFORMANCE HEATSINK.
QTUH45-12B	12	23.2	
QTUH45-15B	15	26.3	
QTUH45-20B	20	31.4	
QTUH45-25B	25	36.5	

DATA



△ QTUH45-10B
 ● QTUH45-12B
 □ QTUH45-15B
 ○ QTUH45-20B
 ▲ QTUH45-25B

● DUCTED CONDITION
 DUMMY HEATER SIZE: 12.7 SQ
 THERMAL RESISTANCE ———
 PRESURE DROP - - - - -

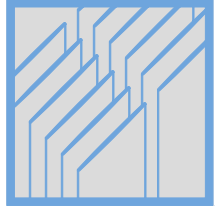
■ BASED ON ALPHA'S STANDARD TEST PROCEDURE.
 REFER TO TECHNICAL INFORMATION.

Alpha Company Ltd.

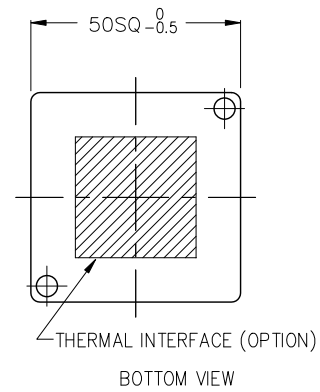
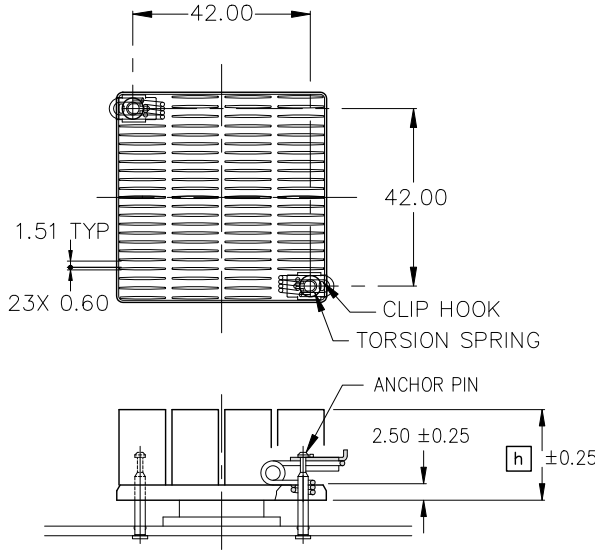
256-1 UEDA, NUMAZU-CITY SHIZUOKA-PREF., JAPAN
 PHONE +81(55)966 0789
 FAX +81(55)966 9192
 E mail : alpha@micforg.co.jp
 URL : www.micforg.co.jp

Alpha Novatech, Inc. - a subsidiary of Alpha Company.

473 Sapena Ct. #12 Santa Clara, CA 95054 USA
 PHONE +1(408)567-8082
 FAX +1(408)567-8053
 E mail : sales@alphanovatech.com
 URL : www.alphanovatech.com



DIM



ANCHOR PIN LENGTH

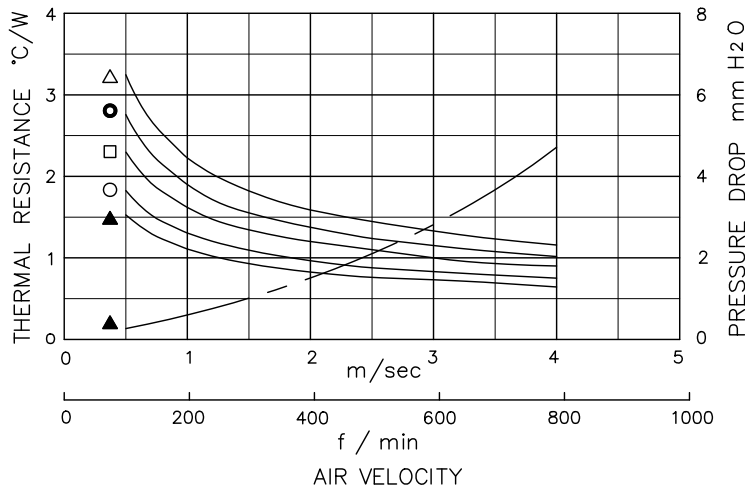
8.00	: ANCR-8
11.00	: ANCR-11
12.00	: ANCR-12
13.00	: ANCR-13
16.00	: ANCR-16

MATERIAL
 HEATSINK : A6063 BLACK ANODIZE
 SMALL IMPERFECTIONS TO SURFACE AND
 FINISH ARE ACCEPTABLE AROUND HOLES
 SPRING : SW-C NICKEL PRECOATED
 HOOK : STAINLESS STEEL 304
 ANCHOR : STAINLESS STEEL 303

DIMENSIONS : mm

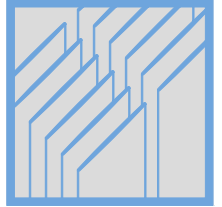
BASIC HEATSINK MODEL NUMBER (SPRING, ANCHOR, TIM NOT INCLUDED)	OVERALL HEIGHT [h]	BASIC HEATSINK WEIGHT (grams)	FEATURES
QTUH50-10B	10	27.5	FOR FORCED CONVECTION HIGH PERFORMANCE HEATSINK.
QTUH50-12B	12	30.3	
QTUH50-15B	15	34.7	
QTUH50-20B	20	41.8	
QTUH50-25B	25	49.0	

DATA

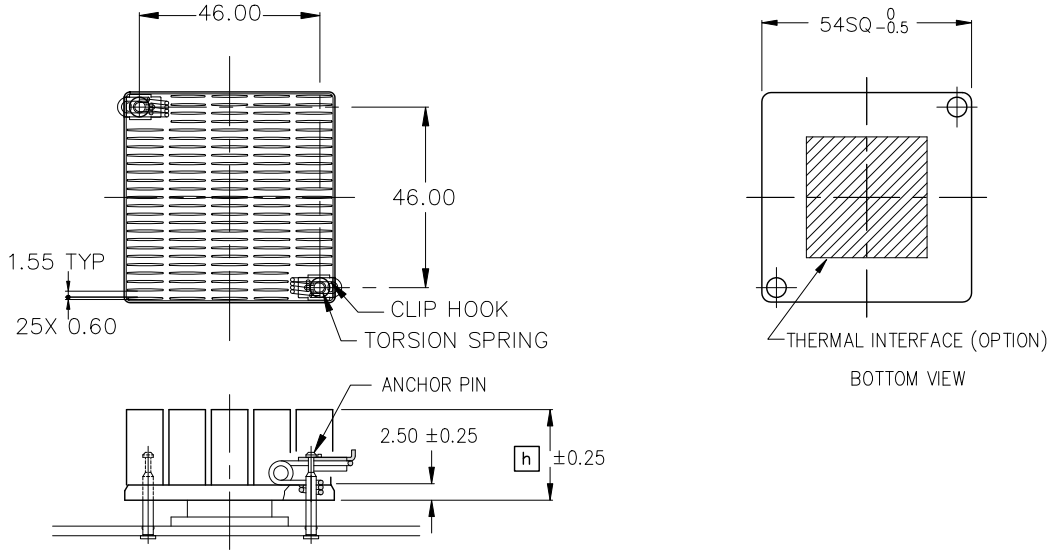


- △ QTUH50-10B
- QTUH50-12B
- QTUH50-15B
- QTUH50-20B
- ▲ QTUH50-25B

● DUCTED CONDITION
 DUMMY HEATER SIZE: 12.7 SQ
 THERMAL RESISTANCE ———
 PRESSURE DROP - - - - -
 ■ BASED ON ALPHA'S STANDARD TEST PROCEDURE.
 REFER TO TECHNICAL INFORMATION.



DIM



ANCHOR PIN LENGTH

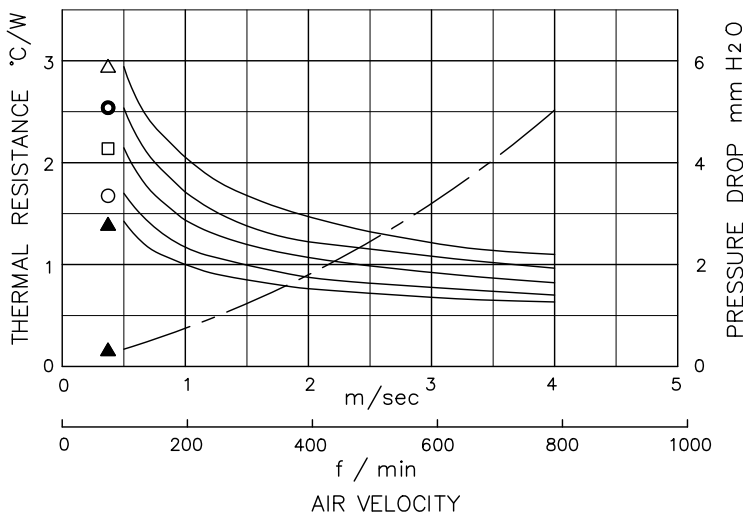
8.00	: ANCR-8
11.00	: ANCR-11
12.00	: ANCR-12
13.00	: ANCR-13
16.00	: ANCR-16

MATERIAL
 HEATSINK : A6063 BLACK ANODIZE
 SMALL IMPERFECTIONS TO SURFACE AND
 FINISH ARE ACCEPTABLE AROUND HOLES
 SPRING : SW-C NICKEL PRECOATED
 HOOK : STAINLESS STEEL 304
 ANCHOR : STAINLESS STEEL 303

DIMENSIONS : mm

BASIC HEATSINK MODEL NUMBER (SPRING, ANCHOR, TIM NOT INCLUDED)	OVERALL HEIGHT [h]	BASIC HEATSINK WEIGHT (grams)	FEATURES
QTUH54-10B	10	30.7	FOR FORCED CONVECTION HIGH PERFORMANCE HEATSINK.
QTUH54-12B	12	33.6	
QTUH54-15B	15	38.1	
QTUH54-20B	20	45.6	
QTUH54-25B	25	53.1	

DATA



- △ QTUH54-10B
- QTUH54-12B
- QTUH54-15B
- ◇ QTUH54-20B
- ▲ QTUH54-25B

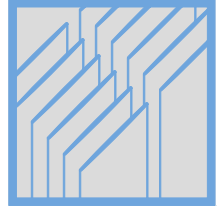
● DUCTED CONDITION
 DUMMY HEATER SIZE: 12.7 SQ
 THERMAL RESISTANCE ———
 PRESURE DROP - - - - -

■ BASED ON ALPHA'S STANDARD TEST PROCEDURE.
 REFER TO TECHNICAL INFORMATION.

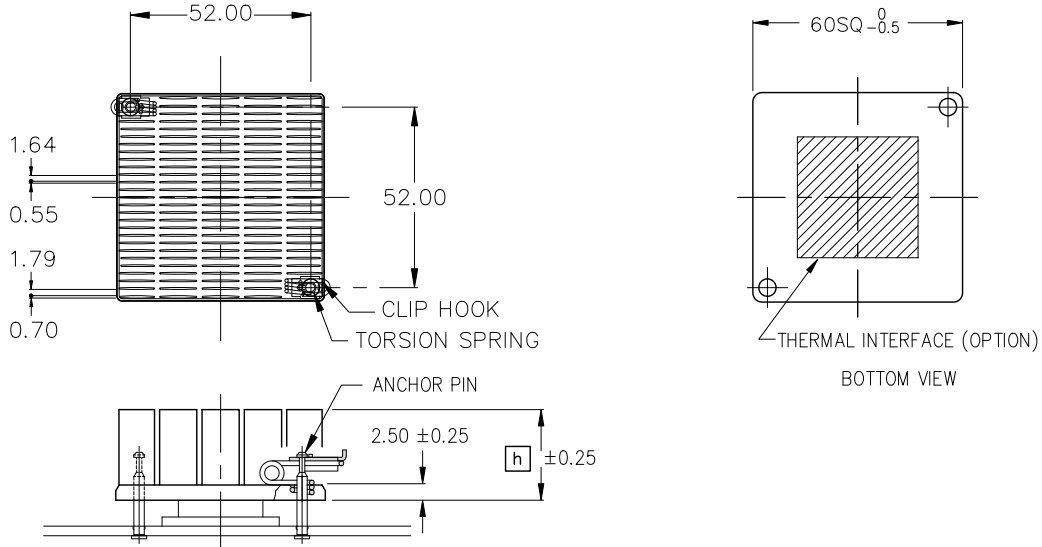
ALPHA

QuickSet HeatSink

QTUH60



DIM



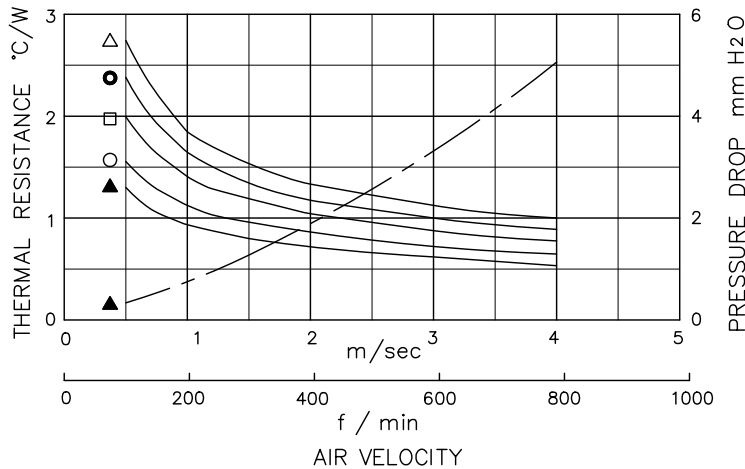
ANCHOR PIN LENGTH
 8.00 : ANCR-8
 11.00 : ANCR-11
 12.00 : ANCR-12
 13.00 : ANCR-13
 16.00 : ANCR-16

MATERIAL
 HEATSINK : A6063 BLACK ANODIZE
 SMALL IMPERFECTIONS TO SURFACE AND
 FINISH ARE ACCEPTABLE AROUND HOLES
 SPRING : SW-C NICKEL PRECOATED
 HOOK : STAINLESS STEEL 304
 ANCHOR : STAINLESS STEEL 303

DIMENSIONS : mm

BASIC HEATSINK MODEL NUMBER (SPRING, ANCHOR, TIM NOT INCLUDED)	OVERALL HEIGHT [h]	BASIC HEATSINK WEIGHT (grams)	FEATURES
QTUH60-10B	10	37.5	FOR FORCED CONVECTION HIGH PERFORMANCE HEATSINK.
QTUH60-12B	12	41.0	
QTUH60-15B	15	46.4	
QTUH60-20B	20	55.4	
QTUH60-25B	25	64.3	

DATA



△ QTUH60-10B
 ● QTUH60-12B
 □ QTUH60-15B
 ◇ QTUH60-20B
 ▲ QTUH60-25B

● DUCTED CONDITION
 DUMMY HEATER SIZE: 12.7 SQ
 THERMAL RESISTANCE ———
 PRESURE DROP - - - -

■ BASED ON ALPHA'S STANDARD TEST PROCEDURE.
 REFER TO TECHNICAL INFORMATION.

Alpha Company Ltd.

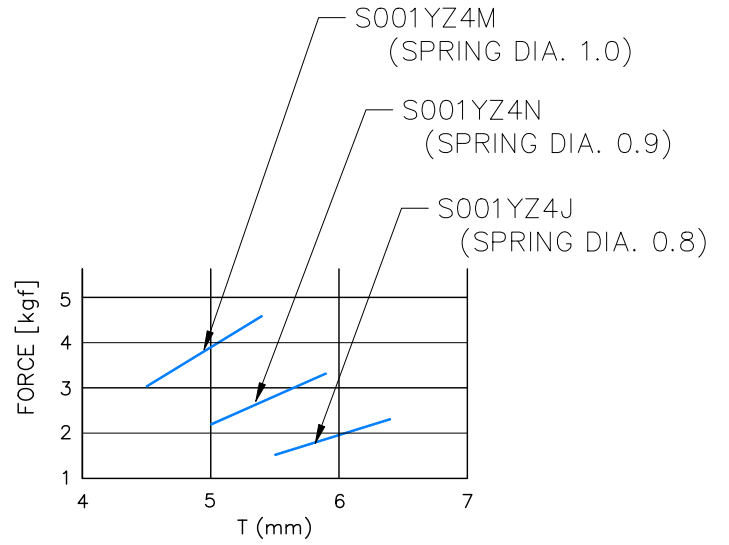
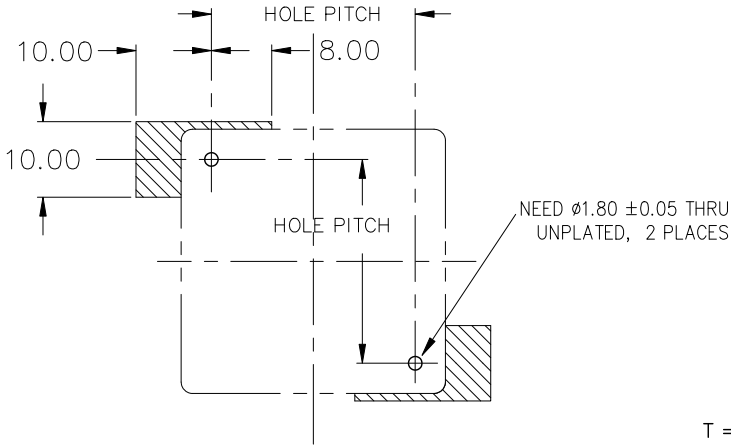
256-1 UEDA, NUMAZU-CITY SHIZUOKA-PREF., JAPAN
 PHONE +81(55)966 0789
 FAX +81(55)966 9192
 E mail : alpha@micforg.co.jp
 URL : www.micforg.co.jp

Alpha Novatech, Inc. - a subsidiary of Alpha Company.

473 Sapena Ct. #12 Santa Clara, CA 95054 USA
 PHONE +1(408)567-8082
 FAX +1(408)567-8053
 E mail : sales@alphanovatech.com
 URL : www.alphanovatech.com

PCB HOLE PATTERN & SUGGESTED KEEP-OUT AREA

● ATTACHMENT FORCE



ANCR-8 : + 3.0	+	CHIP HEIGHT	+	HEATSINK BASE THICK	+	PCB THICK
ANCR-11 : 0						
ANCR-12 : - 1.0						
ANCR-13 : - 2.0						
ANCR-16 : - 5.0						

T =

REF



MODEL NAME INFORMATION

TO BUILD PART NUMBER, PLEASE VISIT OUR WEBSITE www.micforg.co.jp OR CONTACT ALPHA SALES.