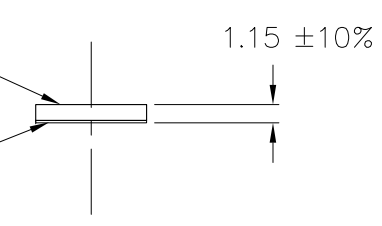
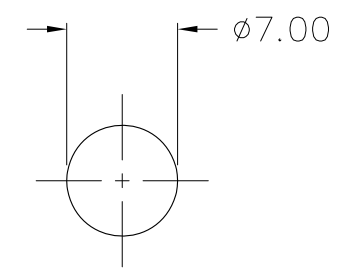


| REVISIONS | | | | |
|-----------|------|-------------|-----|------|
| REV | DATE | DESCRIPTION | CHG | APPR |

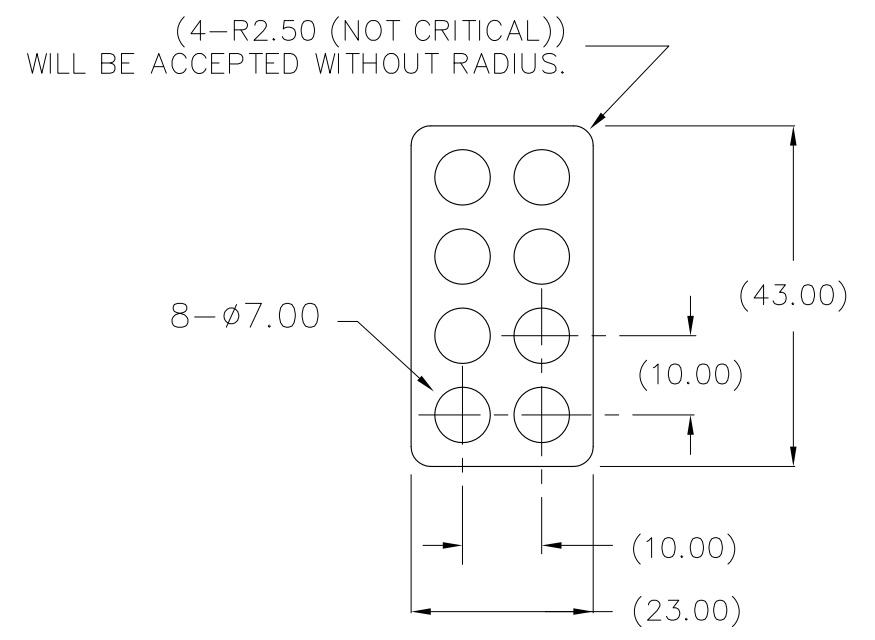
NOTES :

1. ALL DIMENSIONS ARE IN METRIC.
2. MATERIAL
 URETHANES FOAM WITH THIN PET-FILM
 INOAC CORP. PORON SR-U-40P
 1.00 THICKNESS

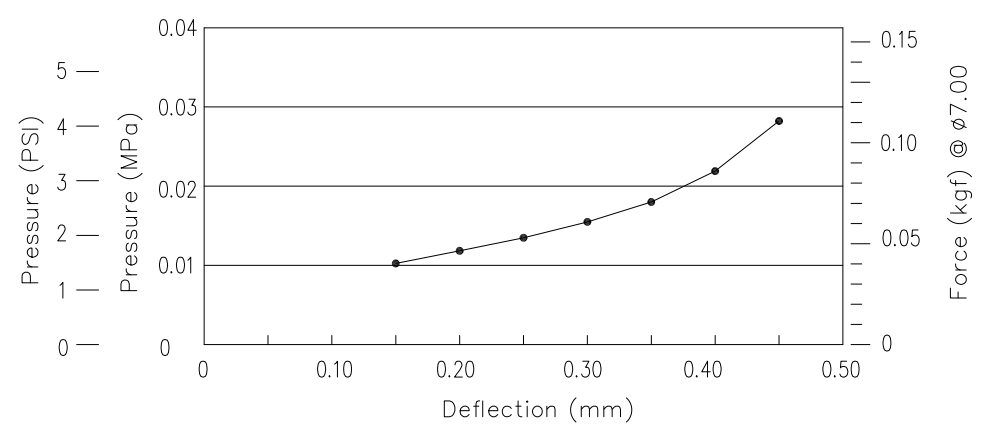
 ADHESIVE TAPE (PET SIDE OF SR-U-40P)
 NITTO DENKO CORP. #5011N
 0.15 THICKNESS
 (SUPPLIED ON A REMOVABLE LINER.)
3. TOLERANCES : ± 0.254
 ALL DIMENSIONS EXCEPT 8- $\phi 7.00$ ARE FOR REFERENCES.
 8- $\phi 7.00$ 以外ノ寸法ハ全テ参考値
4. SHOULD BE THERE AFTER PUNCHING.
 打抜き後打抜き穴ニ留メル



DETAIL 2 : 1



REFERENCE: PRESSURE - DEFLECTION



| ITEM | PART NO. | PART NAME | REMARK | Q'TY |
|------------------------|----------|---------------------------|--------------------------------|-------|
| ALPHA CO.,LTD. | | CSTM'R'S PART NO. | | |
| | | MATERIAL NOTE 2 | NAME SP-7-1-SRU | |
| SCALE 1 : 1 (2 : 1) | | APPR & CHCK Y. SUZUKI | PART NO. & DWG NO. S001ZW6E | REV |
| DATE APR 07 2014 | | DSGN & DWG M. YAMAMOTO | RDCTN: | LOFF: |