

# UBR Series UBL Series

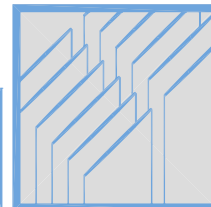
Low Pressure Drop and  
Low Thermal Resistance Heat Sink  
with Mounting Tabs

**ALPHA**

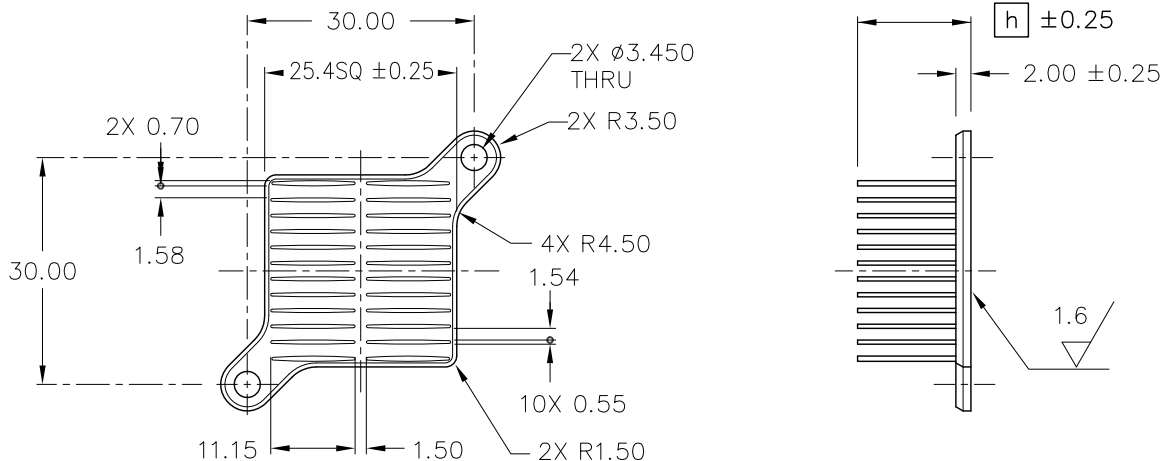
# ALPHA

## Low Pressure Drop and Low Thermal Resistance Heat Sink with Mounting Tabs

# UBR25



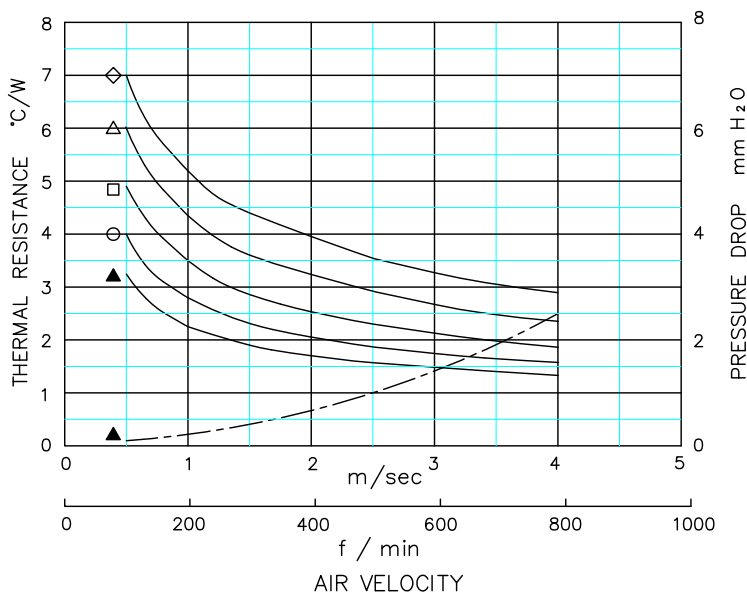
DIM



MODEL	HEIGHT $h$	WEIGHT (grams)
UBR25-8B	8	6.0
UBR25-10B	10	6.7
UBR25-15B	15	8.5
UBR25-20B	20	10.2
UBR25-25B	25	11.9

MATERIAL : A 6063  
FINISH : BLACK ANODIZE  
DIMENSIONS : mm

DATA



- ◇ UBR25-8B
- △ UBR25-10B
- UBR25-15B
- UBR25-20B
- ▲ UBR25-25B

● DUCTED CONDITION  
DUMMY HEATER SIZE: 12.7 SQ  
THERMAL RESISTANCE ———  
PRESURE DROP - - - - -

■ BASED ON ALPHA'S STANDARD TEST PROCEDURE.  
REFER TO TECHNICAL INFORMATION.

Alpha Company Ltd.

256-1 UEDA, NUMAZU-CITY SHIZUOKA-PREF., JAPAN  
PHONE +81(55)966 0789  
FAX +81(55)966 9192  
E mail : alpha@micforg.co.jp  
URL : <http://www.micforg.co.jp>

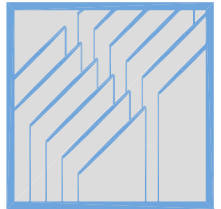
Alpha Novatech, Inc. - a subsidiary of Alpha Company.

473 Sapena Ct. #12 Santa Clara, CA 95054 USA  
PHONE +1(408)567-8082  
FAX +1(408)567-8053  
E mail : sales@alphanovatech.com  
URL : <http://www.alphanovatech.com>

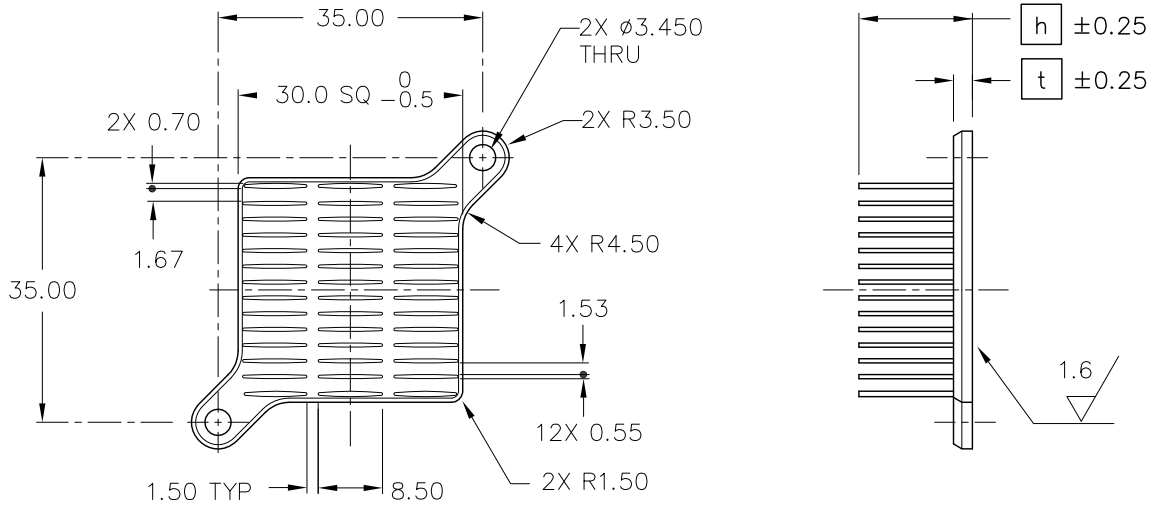
# ALPHA

Low Pressure Drop and  
Low Thermal Resistance Heat Sink  
with Mounting Tabs

# UBR30



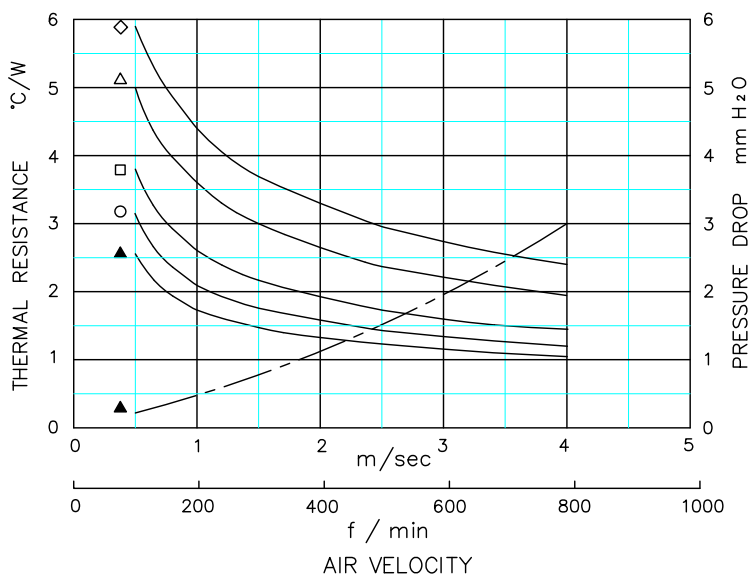
DIM



MODEL	HEIGHT $h$	THICKNESS $t$	WEIGHT (grams)
UBR30-8B	8	2.00	8.0
UBR30-10B	10	2.50	10.0
UBR30-15B	15		12.3
UBR30-20B	20		14.6
UBR30-25B	25		16.9
UBR30- $h$ B	$h < 10$	2.00	-
	$10 \leq h$	2.50	-

MATERIAL : A 6063  
FINISH : BLACK ANODIZE  
DIMENSIONS : mm

DATA



- ◇ UBR30-8B
- △ UBR30-10B
- UBR30-15B
- UBR30-20B
- ▲ UBR30-25B

● DUCTED CONDITION  
DUMMY HEATER SIZE: 12.7 SQ  
THERMAL RESISTANCE ———  
PRESSURE DROP - - - -

■ BASED ON ALPHA'S STANDARD TEST PROCEDURE.  
REFER TO TECHNICAL INFORMATION.

Alpha Company Ltd.

256-1 UEDA, NUMAZU-CITY SHIZUOKA-PREF., JAPAN  
PHONE +81(55)966 0789  
FAX +81(55)966 9192  
E mail : alpha@micforg.co.jp  
URL : <http://www.micforg.co.jp>

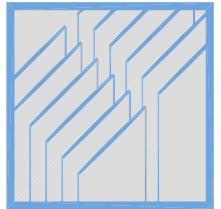
Alpha Novatech, Inc. - a subsidiary of Alpha Company.

473 Sapena Ct. #12 Santa Clara, CA 95054 USA  
PHONE +1(408)567-8082  
FAX +1(408)567-8053  
E mail : sales@alphanovatech.com  
URL : <http://www.alphanovatech.com>

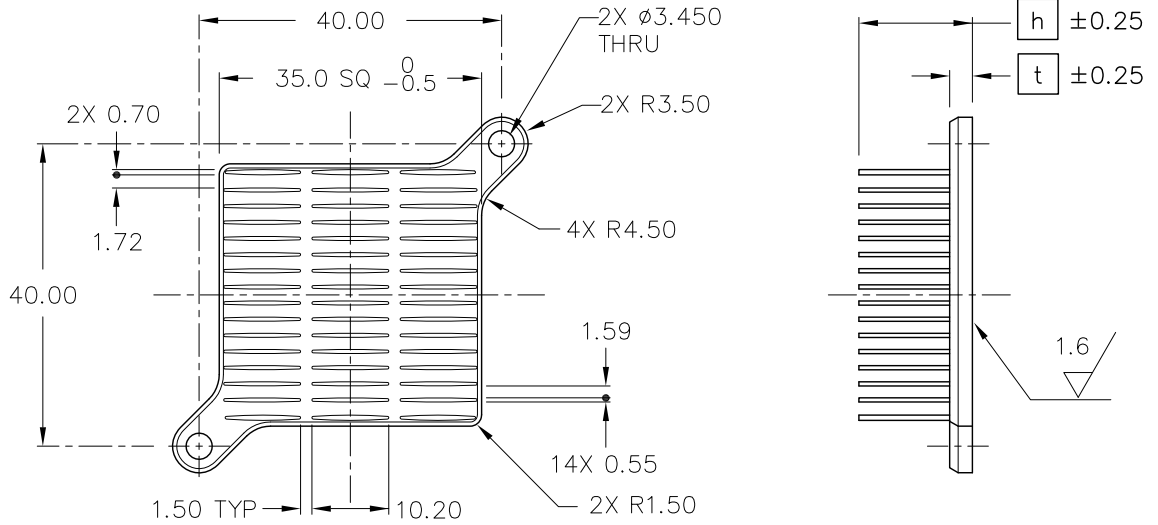
# ALPHA

Low Pressure Drop and  
Low Thermal Resistance Heat Sink  
with Mounting Tabs

# UBR35



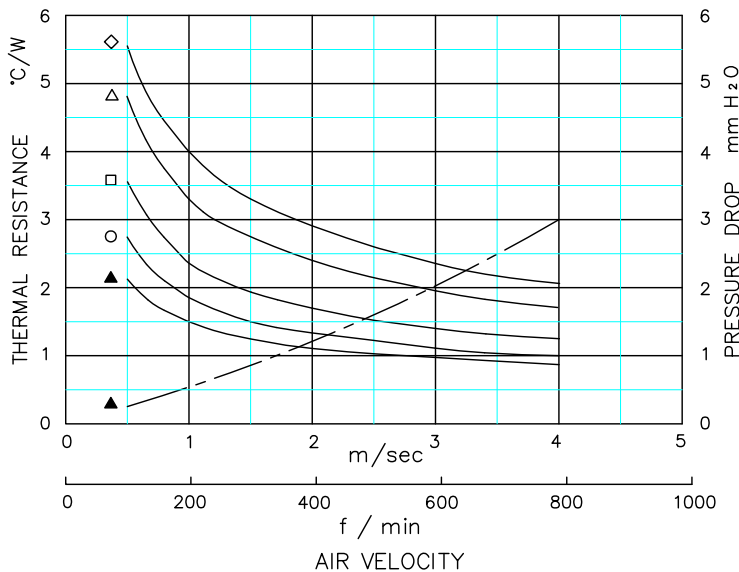
DIM



MODEL	HEIGHT $h$	THICKNESS $t$	WEIGHT (grams)
UBR35-8B	8	2.00	10.8
UBR35-10B	10	3.00	14.9
UBR35-15B	15		18.1
UBR35-20B	20		21.2
UBR35-25B	25		24.4
UBR35- $h$ B	$h < 10$	2.00	-
	$10 \leq h$	3.00	-

MATERIAL : A 6063  
FINISH : BLACK ANODIZE  
DIMENSIONS : mm

DATA



- ◇ UBR35-8B
- △ UBR35-10B
- UBR35-15B
- UBR35-20B
- ▲ UBR35-25B

● DUCTED CONDITION  
DUMMY HEATER SIZE: 12.7 SQ  
THERMAL RESISTANCE ———  
PRESSURE DROP - - - - -

■ BASED ON ALPHA'S STANDARD TEST PROCEDURE.  
REFER TO TECHNICAL INFORMATION.

Alpha Company Ltd.

256-1 UEDA, NUMAZU-CITY SHIZUOKA-PREF., JAPAN  
PHONE +81(55)966 0789  
FAX +81(55)966 9192  
E mail : alpha@micforg.co.jp  
URL : http://www.micforg.co.jp

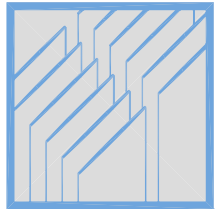
Alpha Novatech, Inc. - a subsidiary of Alpha Company.

473 Sapena Ct. #12 Santa Clara, CA 95054 USA  
PHONE +1(408)567-8082  
FAX +1(408)567-8053  
E mail : sales@alphanovatech.com  
URL : http://www.alphanovatech.com

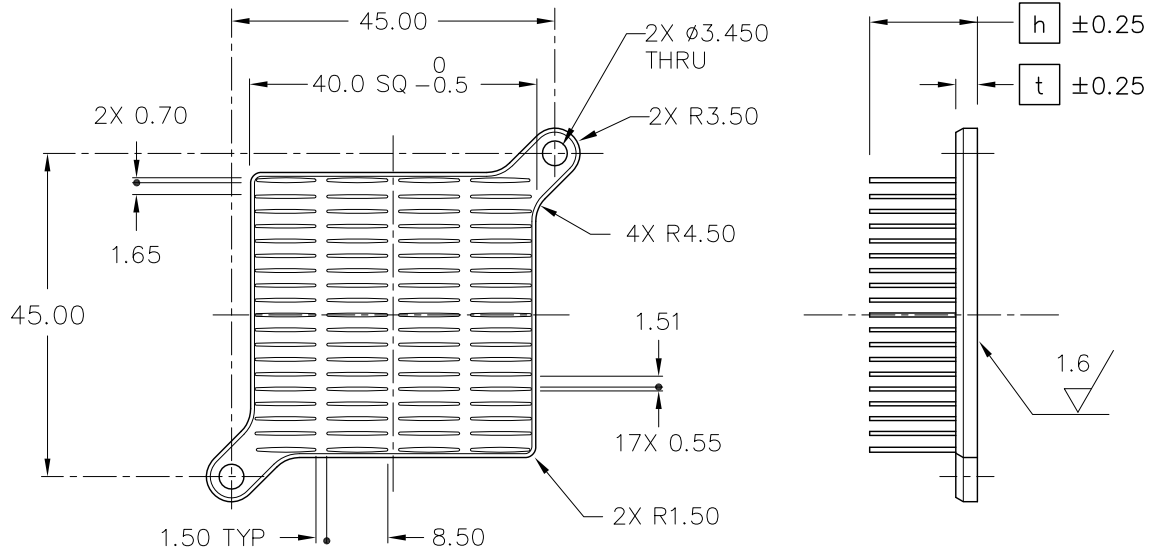
# ALPHA

Low Pressure Drop and  
Low Thermal Resistance Heat Sink  
with Mounting Tabs

# UBR40



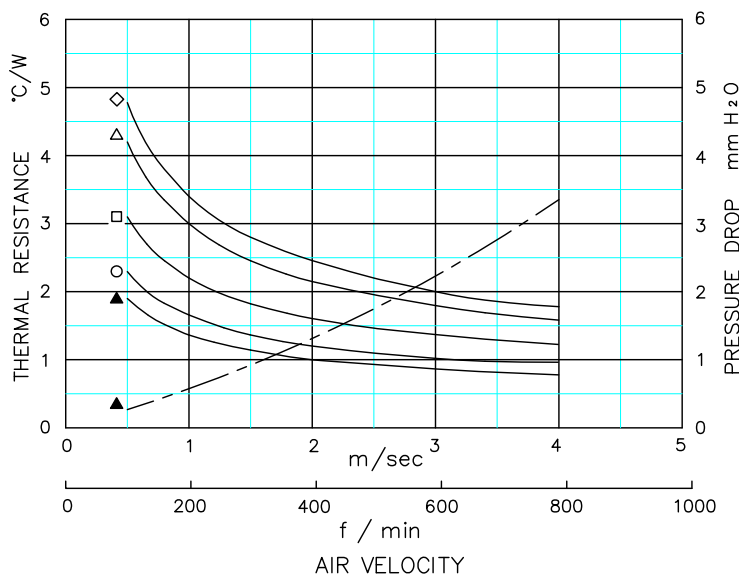
DIM



MODEL	HEIGHT $h$	THICKNESS $t$	WEIGHT (grams)
UBR40-8B	8	3.00	15.8
UBR40-10B	10		19.3
UBR40-15B	15		23.5
UBR40-20B	20		27.6
UBR40-25B	25		31.8
UBR40- $h$ B	$h < 10$	2.50	-
	$10 \leq h$	3.00	-

MATERIAL : A 6063  
FINISH : BLACK ANODIZE  
DIMENSIONS : mm

DATA



- ◇ UBR40-8B
- △ UBR40-10B
- UBR40-15B
- UBR40-20B
- ▲ UBR40-25B

● DUCTED CONDITION  
DUMMY HEATER SIZE: 12.7 SQ  
THERMAL RESISTANCE ———  
PRESSURE DROP - - - -

■ BASED ON ALPHA'S STANDARD TEST PROCEDURE.  
REFER TO TECHNICAL INFORMATION.

Alpha Company Ltd.

256-1 UEDA, NUMAZU-CITY SHIZUOKA-PREF., JAPAN  
PHONE +81(55)966 0789  
FAX +81(55)966 9192  
E mail : alpha@micforg.co.jp  
URL : http://www.micforg.co.jp

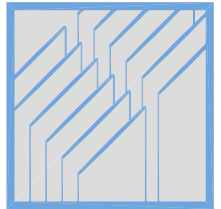
Alpha Novatech, Inc. - a subsidiary of Alpha Company.

473 Sapena Ct. #12 Santa Clara, CA 95054 USA  
PHONE +1(408)567-8082  
FAX +1(408)567-8053  
E mail : sales@alphanovatech.com  
URL : http://www.alphanovatech.com

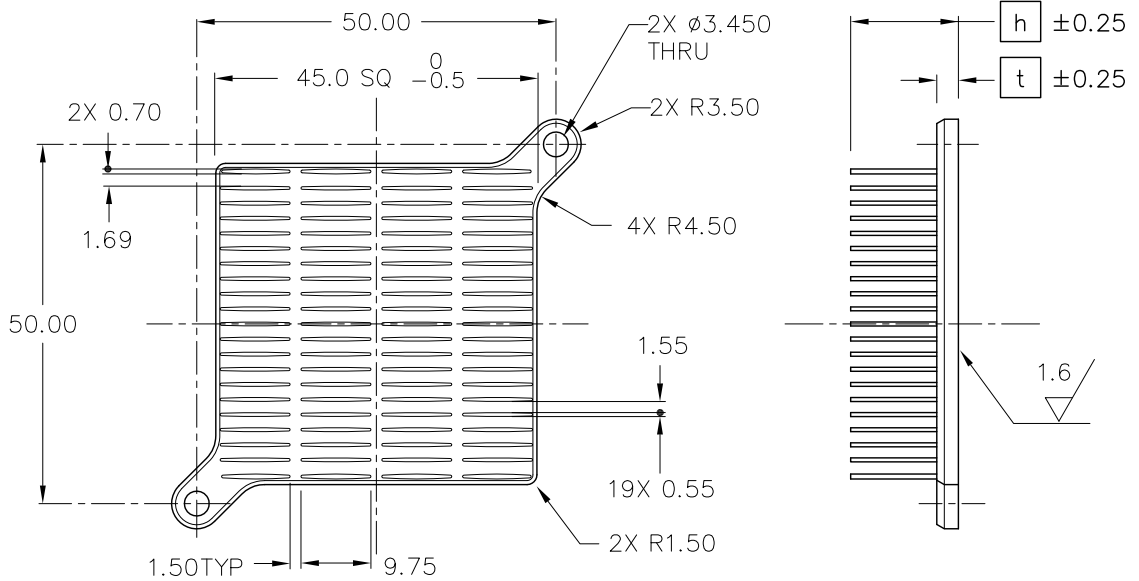
# ALPHA

Low Pressure Drop and  
Low Thermal Resistance Heat Sink  
with Mounting Tabs

# UBR 45



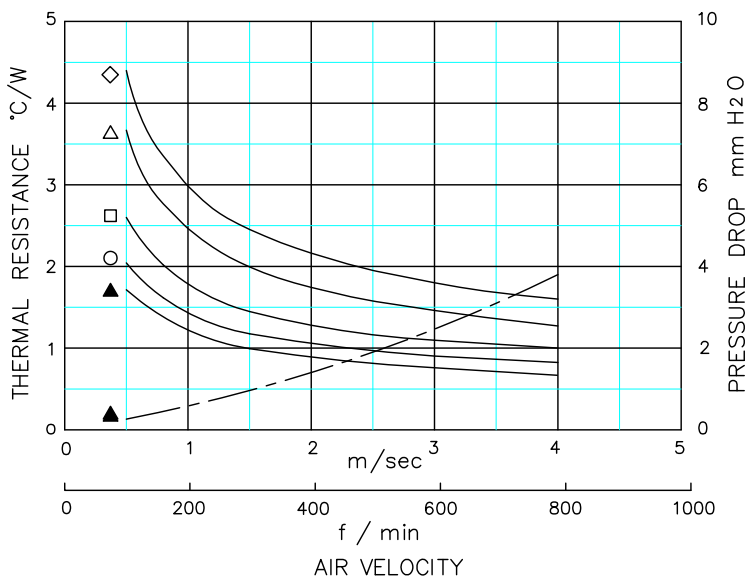
DIM



MODEL	HEIGHT $h$	THICKNESS $t$	WEIGHT (grams)
UBR45-8B	8	3.00	19.9
UBR45-10B	10		24.3
UBR45-15B	15		29.6
UBR45-20B	20		34.8
UBR45-25B	25		40.1
UBR45- $h$ B	$h < 10$	2.50	-
	$10 \leq h$	3.00	-

MATERIAL : A 6063  
FINISH : BLACK ANODIZE  
DIMENSIONS : mm

DATA



- ◇ UBR45-8B
- △ UBR45-10B
- UBR45-15B
- UBR45-20B
- ▲ UBR45-25B

● DUCTED CONDITION  
DUMMY HEATER SIZE: 12.7 SQ  
THERMAL RESISTANCE ———  
PRESSURE DROP - - - - -

■ BASED ON ALPHA'S STANDARD TEST PROCEDURE.  
REFER TO TECHNICAL INFORMATION.

Alpha Company Ltd.

256-1 UEDA, NUMAZU-CITY SHIZUOKA-PREF., JAPAN  
PHONE +81(55)966 0789  
FAX +81(55)966 9192  
E mail : alpha@micforg.co.jp  
URL : http://www.micforg.co.jp

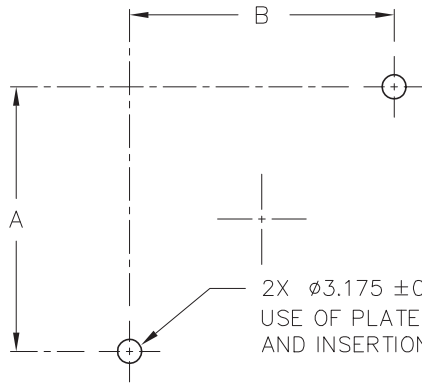
Alpha Novatech, Inc. - a subsidiary of Alpha Company.

473 Sapena Ct. #12 Santa Clara, CA 95054 USA  
PHONE +1(408)567-8082  
FAX +1(408)567-8053  
E mail : sales@alphanovatech.com  
URL : http://www.alphanovatech.com

REF



## PCB HOLE LAYOUT



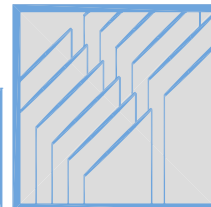
LPDR25, UBR25 AND NR25	30.0	30.0
LPDR30, UBR30 AND NR30	35.0	35.0
LPDR35, UBR35 AND NR35	40.0	40.0
LPDR40, UBR40 AND NR40	45.0	45.0
LPDR45, UBR45 AND NR45	50.0	50.0
MODEL	A	B

PUSH-IN-PIN CATALOG: <http://www.micforg.co.jp/dxf/PIP-3175.pdf>

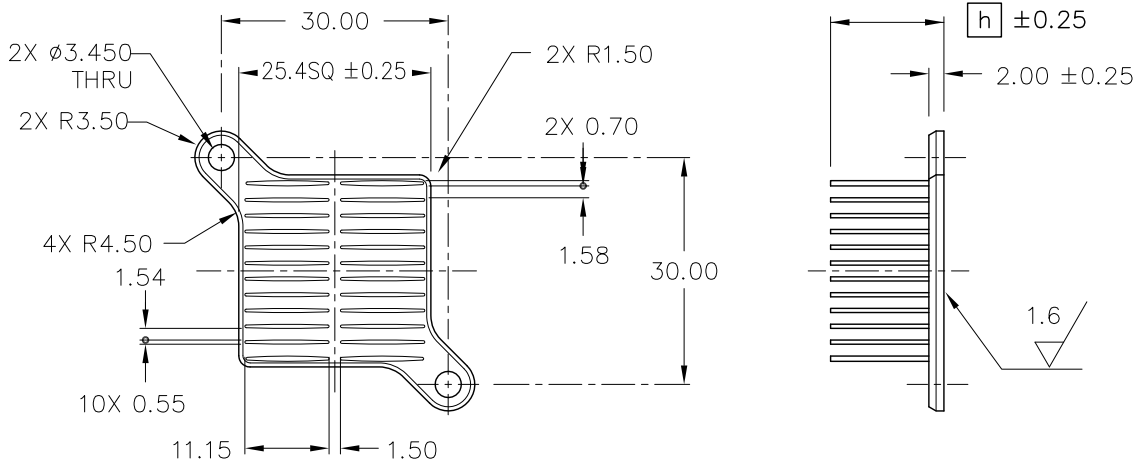
# ALPHA

Low Pressure Drop and  
Low Thermal Resistance Heat Sink  
with Mounting Tabs

# UBL25



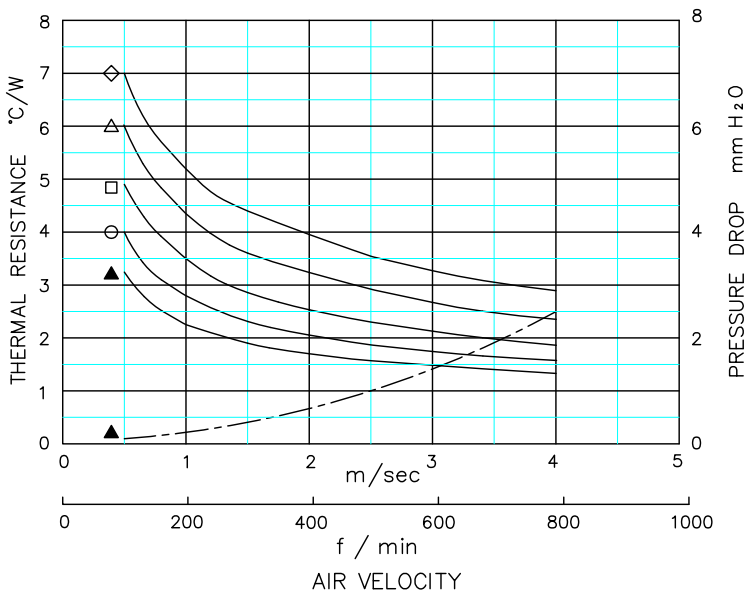
DIM



MODEL	HEIGHT $h$	WEIGHT (grams)
UBL25-8B	8	6.0
UBL25-10B	10	6.7
UBL25-15B	15	8.5
UBL25-20B	20	10.2
UBL25-25B	25	11.9

MATERIAL : A 6063  
FINISH : BLACK ANODIZE  
DIMENSIONS : mm

DATA



- ◇ UBL25-8B
  - △ UBL25-10B
  - UBL25-15B
  - UBL25-20B
  - ▲ UBL25-25B
- DUCTED CONDITION  
DUMMY HEATER SIZE: 12.7 SQ  
THERMAL RESISTANCE ———  
PRESURE DROP - - - -
- BASED ON ALPHA'S STANDARD TEST PROCEDURE.  
REFER TO TECHNICAL INFORMATION.

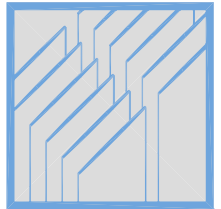
Alpha Company Ltd.

256-1 UEDA, NUMAZU-CITY SHIZUOKA-PREF., JAPAN  
PHONE +81(55)966 0789  
FAX +81(55)966 9192  
E mail : alpha@micforg.co.jp  
URL : http://www.micforg.co.jp

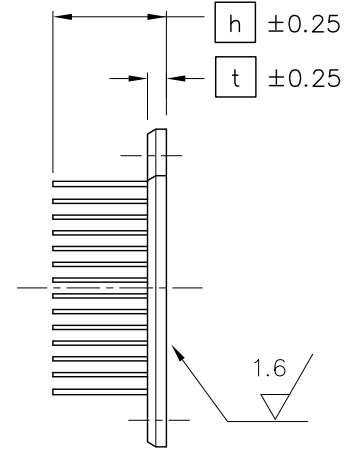
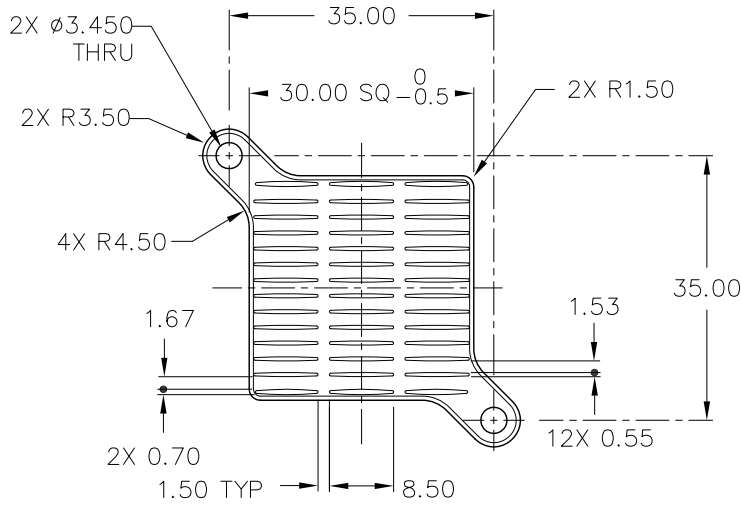
Alpha Novatech, Inc. - a subsidiary of Alpha Company.

473 Sapena Ct. #12 Santa Clara, CA 95054 USA  
PHONE +1(408)567-8082  
FAX +1(408)567-8053  
E mail : sales@alphanovatech.com  
URL : http://www.alphanovatech.com





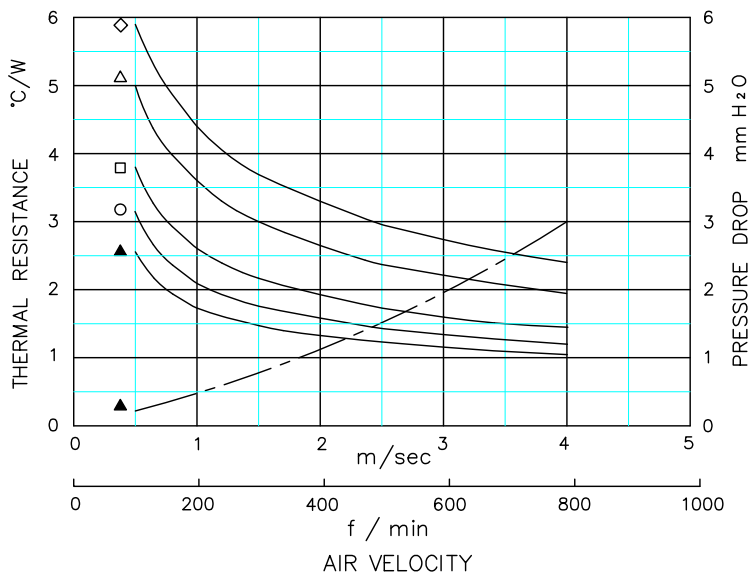
DIM



MODEL	HEIGHT $h$	THICKNESS $t$	WEIGHT (grams)
UBL30-8B	8	2.00	8.0
UBL30-10B	10	2.50	10.0
UBL30-15B	15		12.3
UBL30-20B	20		14.6
UBL30-25B	25		16.9
UBL30- $h$ B	$h < 10$	2.00	-
	$10 \leq h$	2.50	-

MATERIAL : A 6063  
FINISH : BLACK ANODIZE  
DIMENSIONS : mm

DATA



- ◇ UBL30-8B
- △ UBL30-10B
- UBL30-15B
- UBL30-20B
- ▲ UBL30-25B

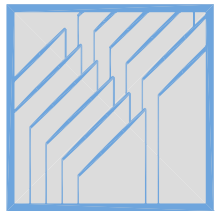
● DUCTED CONDITION  
DUMMY HEATER SIZE: 12.7 SQ  
THERMAL RESISTANCE ———  
PRESSURE DROP - - - - -

■ BASED ON ALPHA'S STANDARD TEST PROCEDURE.  
REFER TO TECHNICAL INFORMATION.

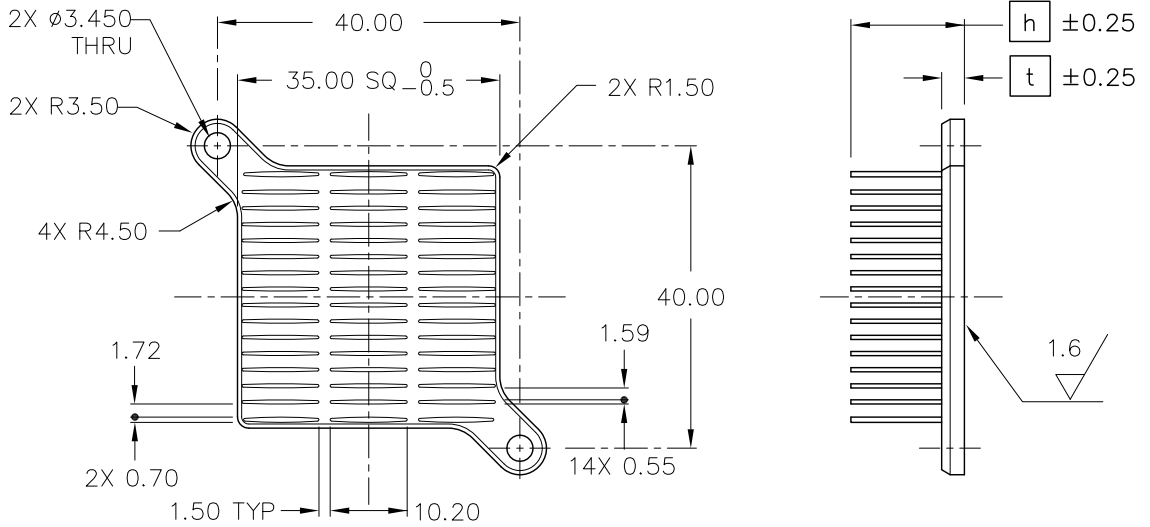
# ALPHA

Low Pressure Drop and  
Low Thermal Resistance Heat Sink  
with Mounting Tabs

# UBL35



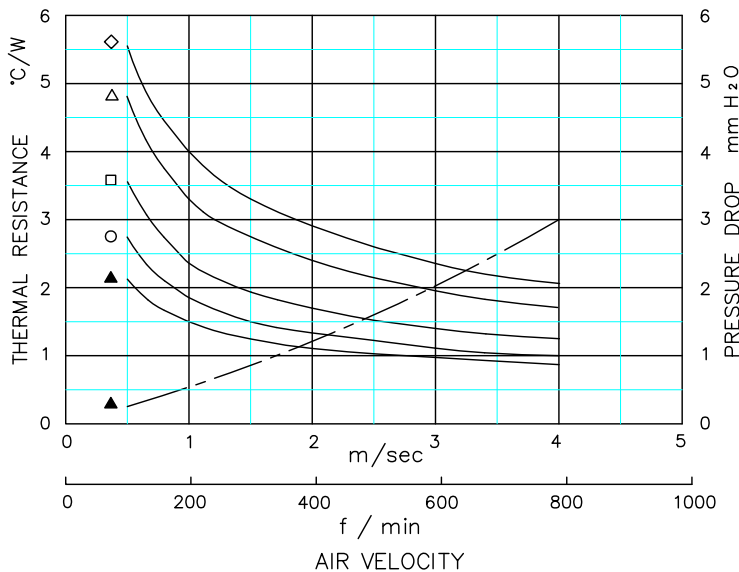
DIM



MODEL	HEIGHT $h$	THICKNESS $t$	WEIGHT (grams)
UBL35-8B	8	2.00	10.8
UBL35-10B	10	3.00	14.9
UBL35-15B	15		18.1
UBL35-20B	20		21.2
UBL35-25B	25		24.4
UBL35- $h$ B	$h < 10$	2.00	-
	$10 \leq h$	3.00	-

MATERIAL : A 6063  
FINISH : BLACK ANODIZE  
DIMENSIONS : mm

DATA



- ◇ UBL35-8B
- △ UBL35-10B
- UBL35-15B
- UBL35-20B
- ▲ UBL35-25B

● DUCTED CONDITION  
DUMMY HEATER SIZE: 12.7 SQ  
THERMAL RESISTANCE ———  
PRESSURE DROP - - - -

■ BASED ON ALPHA'S STANDARD TEST PROCEDURE.  
REFER TO TECHNICAL INFORMATION.

Alpha Company Ltd.

256-1 UEDA, NUMAZU-CITY SHIZUOKA-PREF., JAPAN  
PHONE +81(55)966 0789  
FAX +81(55)966 9192  
E mail : alpha@micforg.co.jp  
URL : http://www.micforg.co.jp

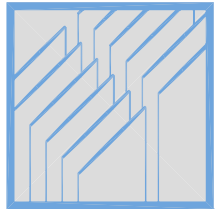
Alpha Novatech, Inc. - a subsidiary of Alpha Company.

473 Sapena Ct. #12 Santa Clara, CA 95054 USA  
PHONE +1(408)567-8082  
FAX +1(408)567-8053  
E mail : sales@alphanovatech.com  
URL : http://www.alphanovatech.com

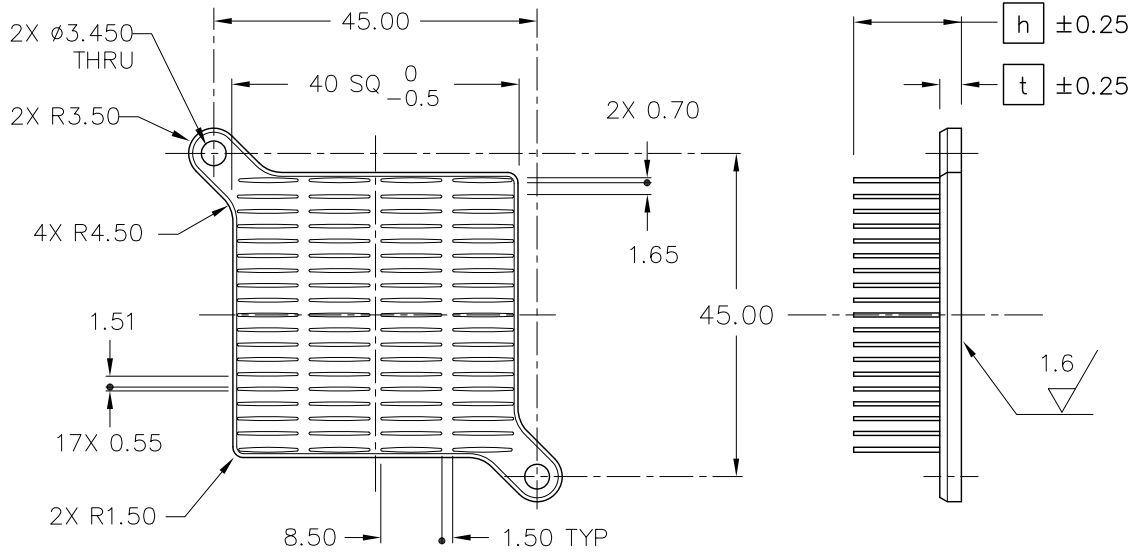
# ALPHA

Low Pressure Drop and  
Low Thermal Resistance Heat Sink  
with Mounting Tabs

# UBL 40



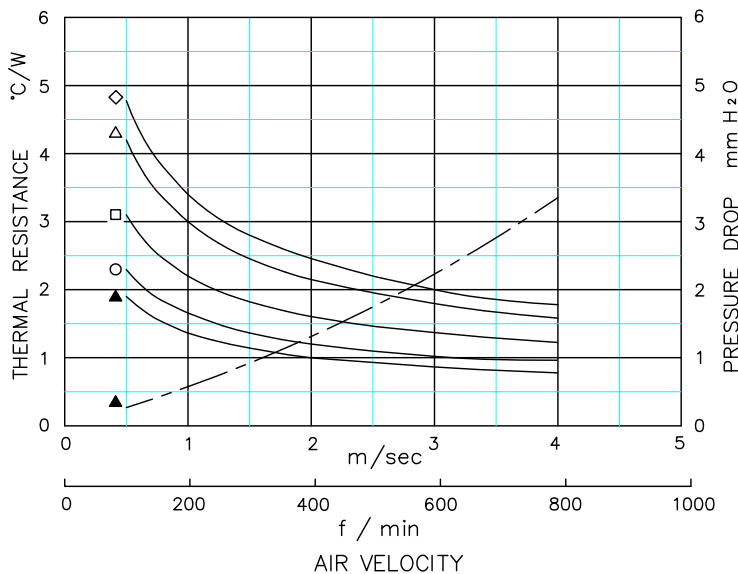
DIM



MODEL	HEIGHT $h$	THICKNESS $t$	WEIGHT (grams)
UBL40-8B	8	3.00	15.8
UBL40-10B	10		19.3
UBL40-15B	15		23.5
UBL40-20B	20		27.6
UBL40-25B	25		31.8
UBL40- $h$ B	$h < 10$	2.50	-
	$10 \leq h$	3.00	-

MATERIAL : A 6063  
FINISH : BLACK ANODIZE  
DIMENSIONS : mm

DATA



- ◇ UBL40-8B
- △ UBL40-10B
- UBL40-15B
- UBL40-20B
- ▲ UBL40-25B

● DUCTED CONDITION  
DUMMY HEATER SIZE: 12.7 SQ  
THERMAL RESISTANCE ———  
PRESURE DROP - - - - -

■ BASED ON ALPHA'S STANDARD TEST PROCEDURE.  
REFER TO TECHNICAL INFORMATION.

Alpha Company Ltd.

256-1 UEDA, NUMAZU-CITY SHIZUOKA-PREF., JAPAN  
PHONE +81(55)966 0789  
FAX +81(55)966 9192  
E mail : alpha@micforg.co.jp  
URL : http://www.micforg.co.jp

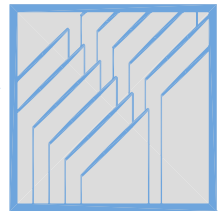
Alpha Novatech, Inc. - a subsidiary of Alpha Company.

473 Sapena Ct. #12 Santa Clara, CA 95054 USA  
PHONE +1(408)567-8082  
FAX +1(408)567-8053  
E mail : sales@alphanovatech.com  
URL : http://www.alphanovatech.com

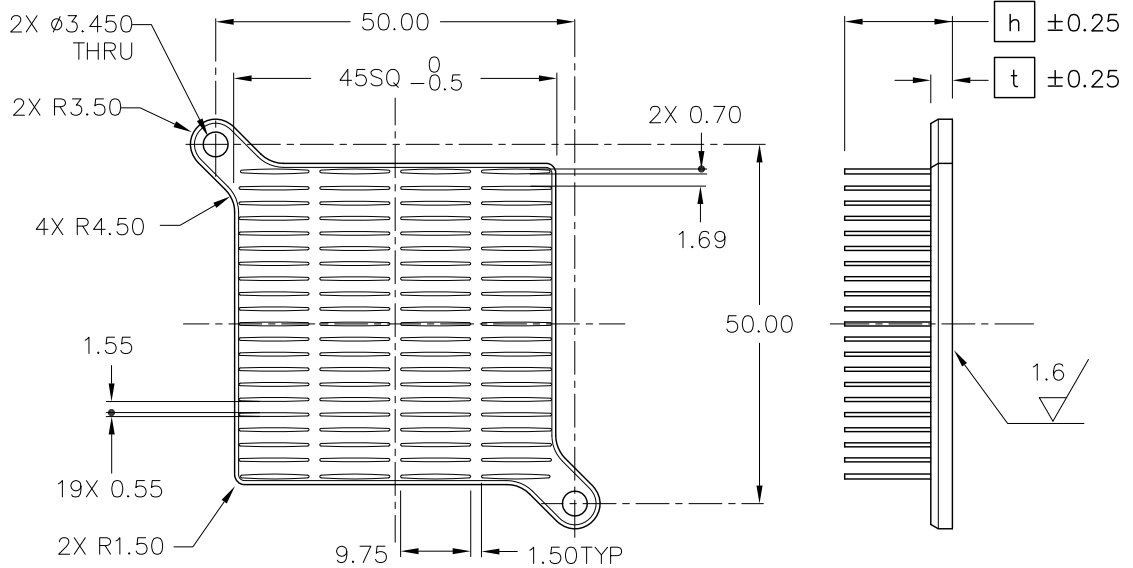
# ALPHA

Low Pressure Drop and  
Low Thermal Resistance Heat Sink  
with Mounting Tabs

# UBL 45



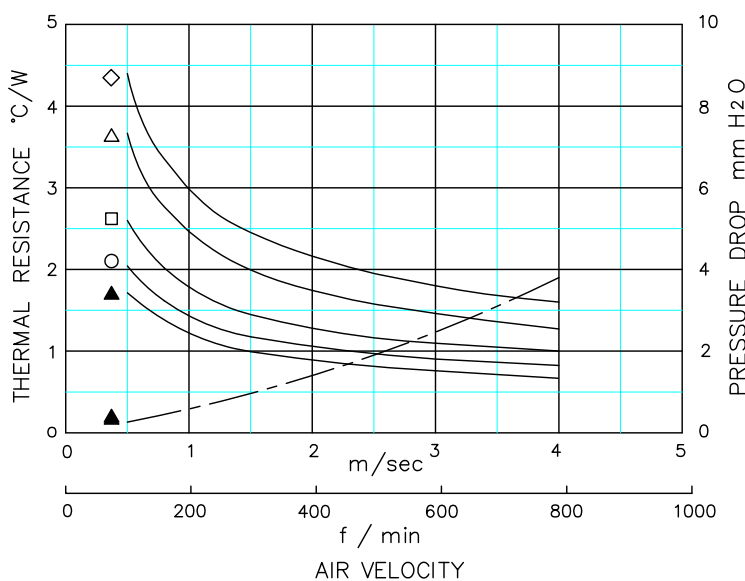
DIM



MODEL	HEIGHT $h$	THICKNESS $t$	WEIGHT (grams)
UBL45-8B	8	3.00	19.9
UBL45-10B	10		24.3
UBL45-15B	15		29.6
UBL45-20B	20		34.8
UBL45-25B	25		40.1
UBL45- $h$ B	$h < 10$	2.50	-
	$10 \leq h$	3.00	-

MATERIAL : A 6063  
FINISH : BLACK ANODIZE  
DIMENSIONS : mm

DATA



- ◇ UBL45-8B
- △ UBL45-10B
- UBL45-15B
- UBL45-20B
- ▲ UBL45-25B

● DUCTED CONDITION  
DUMMY HEATER SIZE: 12.7 SQ  
THERMAL RESISTANCE ———  
PRESURE DROP - - - - -

■ BASED ON ALPHA'S STANDARD TEST PROCEDURE.  
REFER TO TECHNICAL INFORMATION.

Alpha Company Ltd.

256-1 UEDA, NUMAZU-CITY SHIZUOKA-PREF., JAPAN  
PHONE +81(55)966 0789  
FAX +81(55)966 9192  
E mail : alpha@micforg.co.jp  
URL : http://www.micforg.co.jp

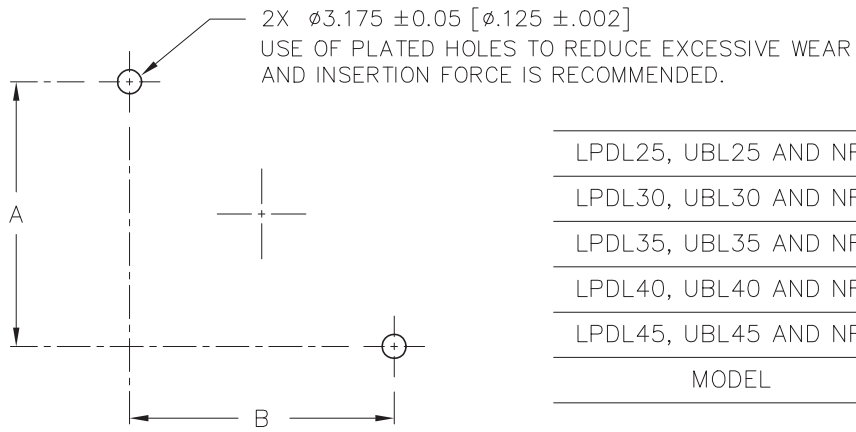
Alpha Novatech, Inc. - a subsidiary of Alpha Company.

473 Sapena Ct. #12 Santa Clara, CA 95054 USA  
PHONE +1(408)567-8082  
FAX +1(408)567-8053  
E mail : sales@alphanovatech.com  
URL : http://www.alphanovatech.com

REF



## PCB HOLE LAYOUT



LPDL25, UBL25 AND NR25	30.0	30.0
LPDL30, UBL30 AND NR30	35.0	35.0
LPDL35, UBL35 AND NR35	40.0	40.0
LPDL40, UBL40 AND NR40	45.0	45.0
LPDL45, UBL45 AND NR45	50.0	50.0
MODEL	A	B

PUSH-IN-PIN CATALOG: <http://www.micforg.co.jp/dxf/PIP-3175.pdf>